

Time Barber & Osgerby

Layout Suggestions

Mutina

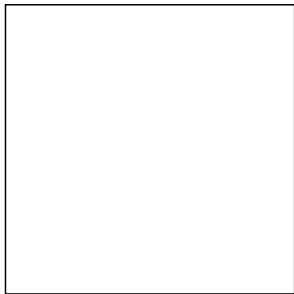
Layout Suggestions

Time è proposta nei formati 20,5x20,5 cm, 3,9x20,5 cm e 3,9x3,9 cm, declinati in una palette di 8 colori – Etna Black, Dakota Grey, Dover White, Salta Red, Highland Green, Virginia Blue, Sahara Sand e Atlas Brown – disponibili sia in versione Rough che Smooth. Le due finiture sono state pensate per essere combinate tra loro: alternando i diversi moduli è possibile creare infiniti layout, dai più semplici, che giocano principalmente con le texture, a quelli più creativi, che sfruttano l'alternanza di colori.

Time is offered in the sizes 20,5x20,5 cm, 3,9x20,5 cm e 3,9x3,9 cm, available in a palette of eight colours – Etna Black, Dakota Grey, Dover White, Salta Red, Highland Green, Virginia Blue, Sahara Sand, and Atlas Brown – in both Rough and Smooth versions. The two finishes have been conceived to be paired with each other: by alternating them in the several modules, it is possible to create infinite layouts, from the simplest solutions, playing mostly with the textures, to the most creative ones, alternating colours.

Technical Features

collection	Time
design	Edward Barber & Jay Osgerby, 2023
production	Industrial
material	Unglazed and not rectified porcelain stoneware
thickness	12 mm
sizes	20,5·20,5 cm (8"·8") 3,9·20,5 cm (1,5"·8") 3,9·3,9 cm (1,5"·1,5")
specification	8 Colours Each colour is available in 2 textures: rough and smooth.
complementary pieces	Skirting
category	UNI EN 14411 App G (Bla group) UGL



20,5·20,5 cm
8"·8"

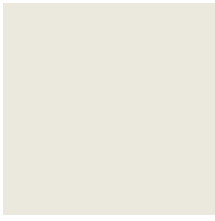


3,9·20,5 cm
1,5"·8"

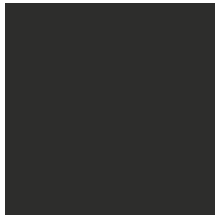


3,9·3,9 cm
1,5"·1,5"

Colours



Dover White Smooth



Etna Black Smooth



Dakota Grey Smooth



Atlas Brown Smooth



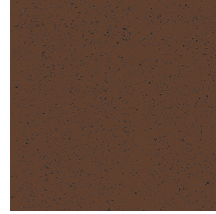
Dover White Rough



Etna Black Rough



Dakota Grey Rough



Atlas Brown Rough



Virginia Blue Smooth



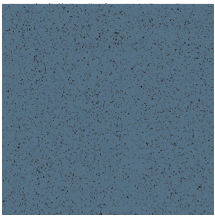
Highland Green Smooth



Salta Red Smooth



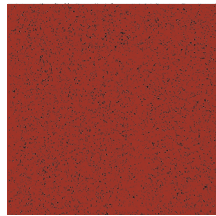
Sahara Sand Smooth



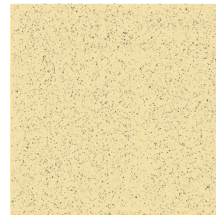
Virginia Blue Rough



Highland Green Rough



Salta Red Rough




Sahara Sand Rough



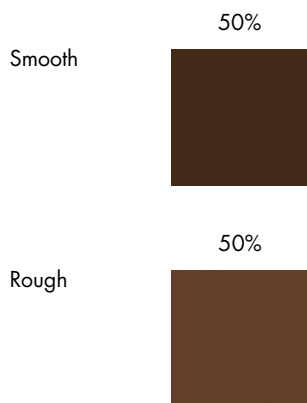
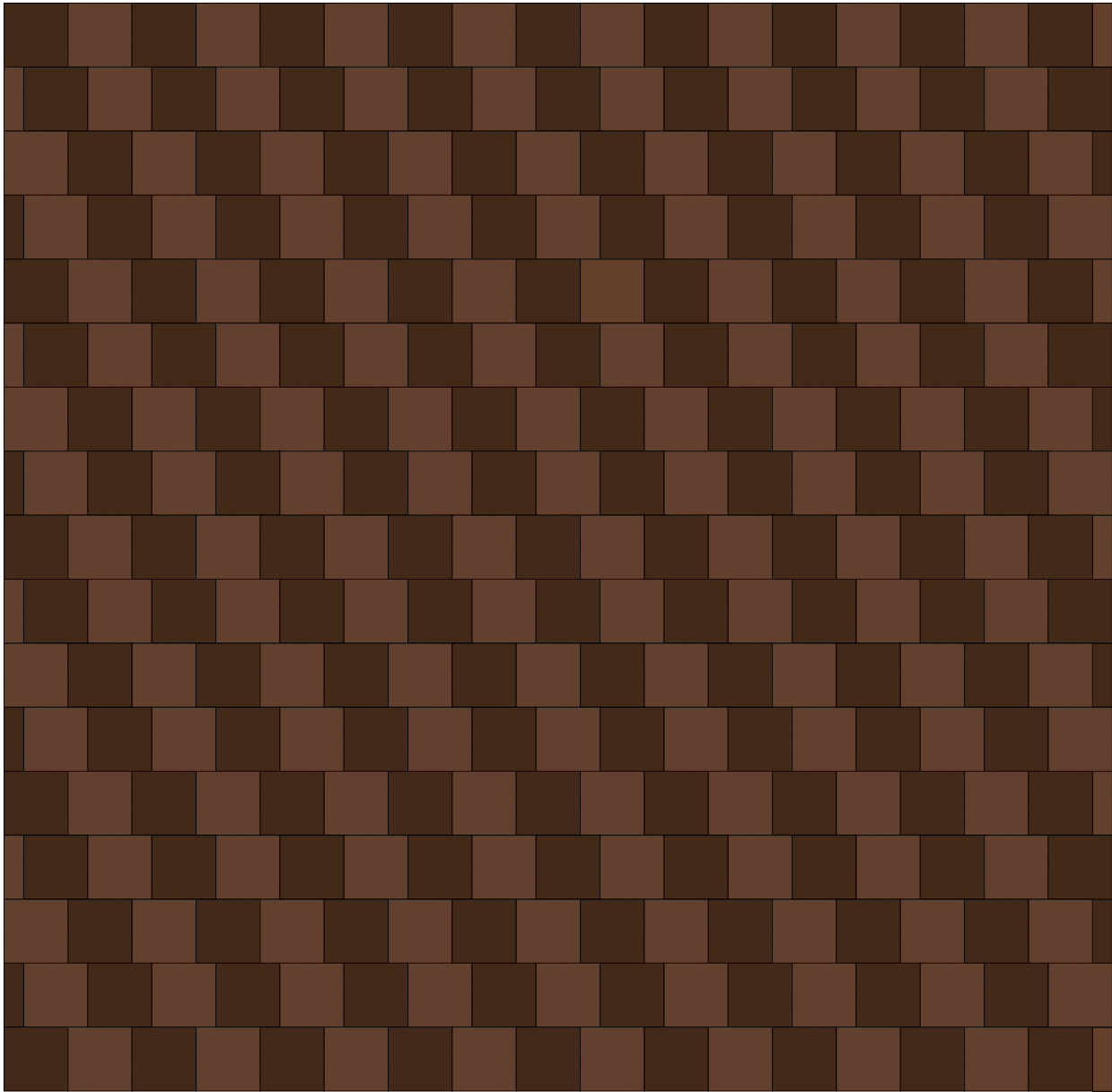
Smooth

100%

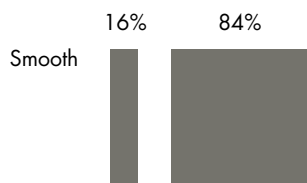
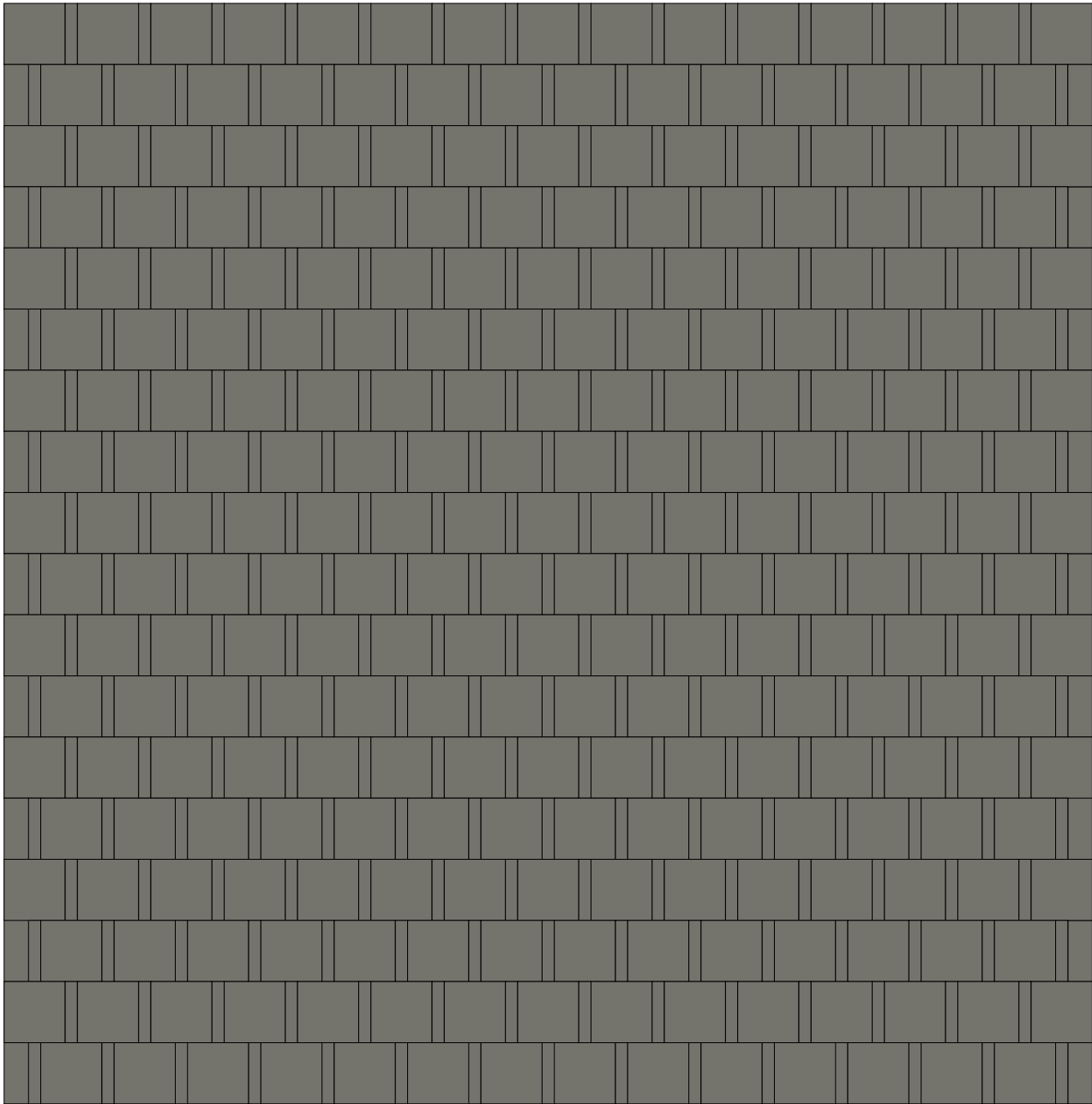


Le percentuali sono articolate su 1 mq di composizione.
Le quantità ricavate vengono arrotondate alla scatola completa.

The percentages are organised on a composition of 1 sqm.
The amounts obtained are rounded to the full box.

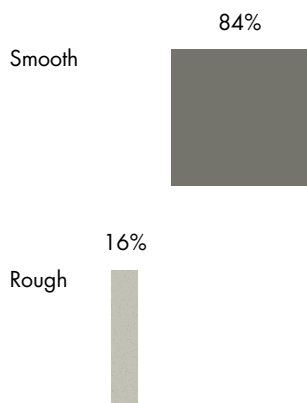
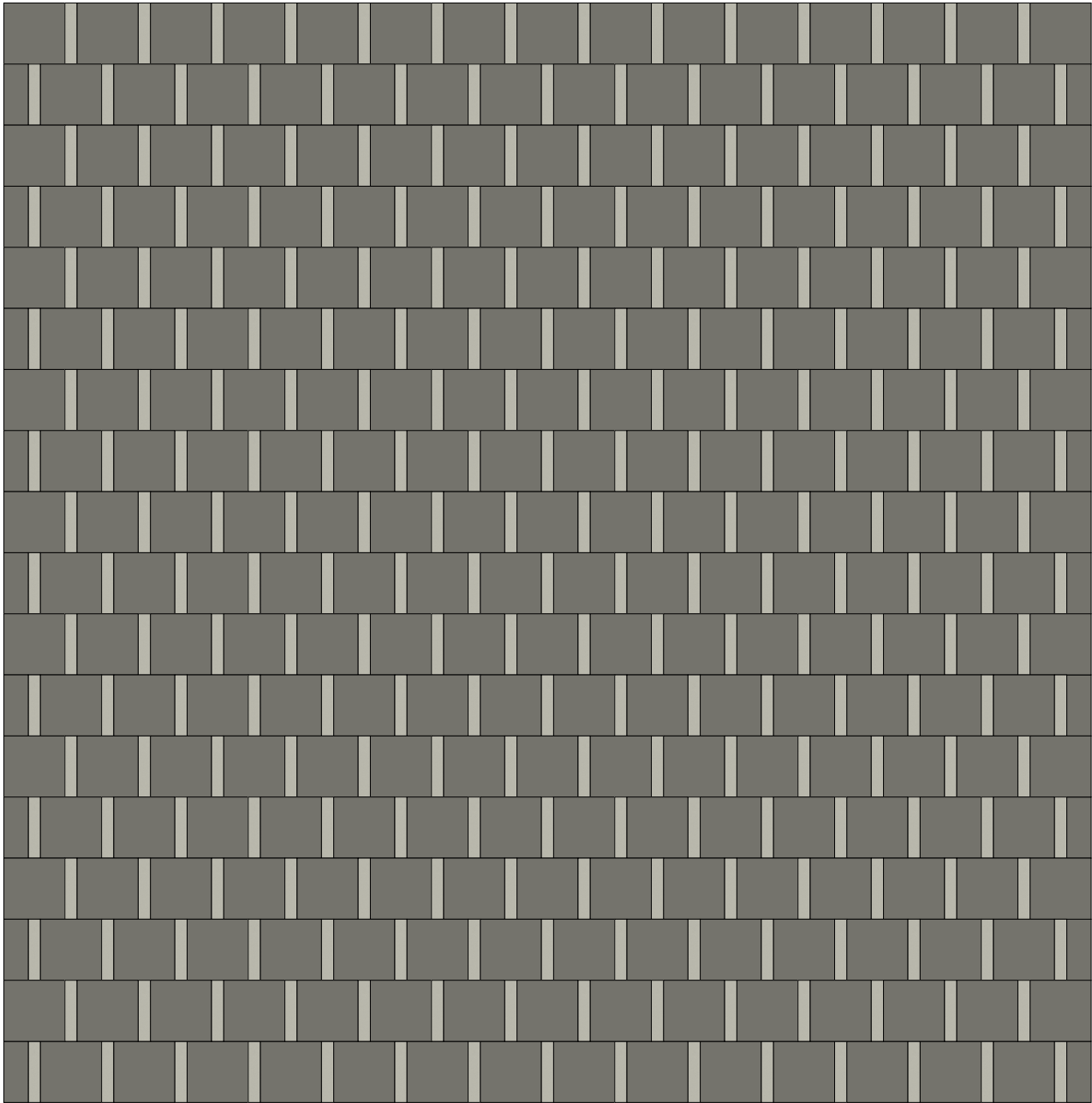


Le percentuali sono articolate su 1 mq di composizione.
Le quantità ricavate vengono arrotondate alla scatola completa.

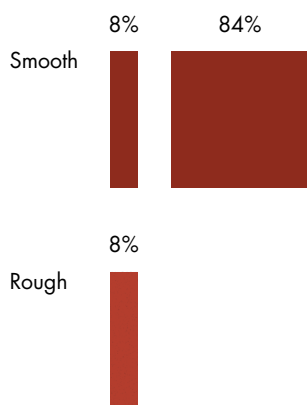
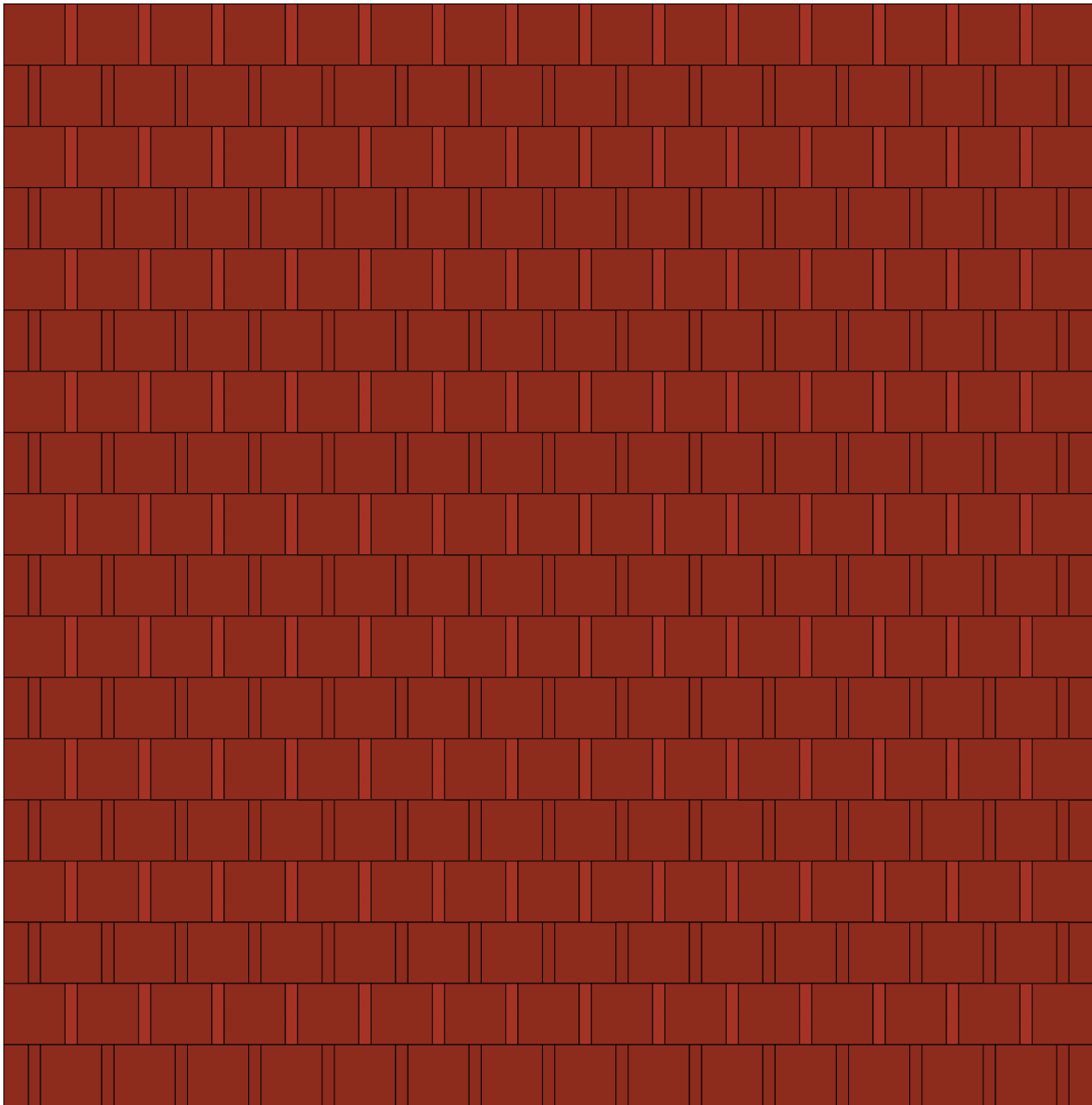


Le percentuali sono articolate su 1 mq di composizione.
Le quantità ricavate vengono arrotondate alla scatola completa.

The percentages are organised on a composition of 1 sqm.
The amounts obtained are rounded to the full box.

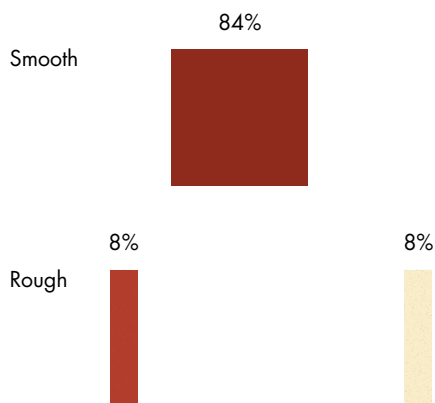
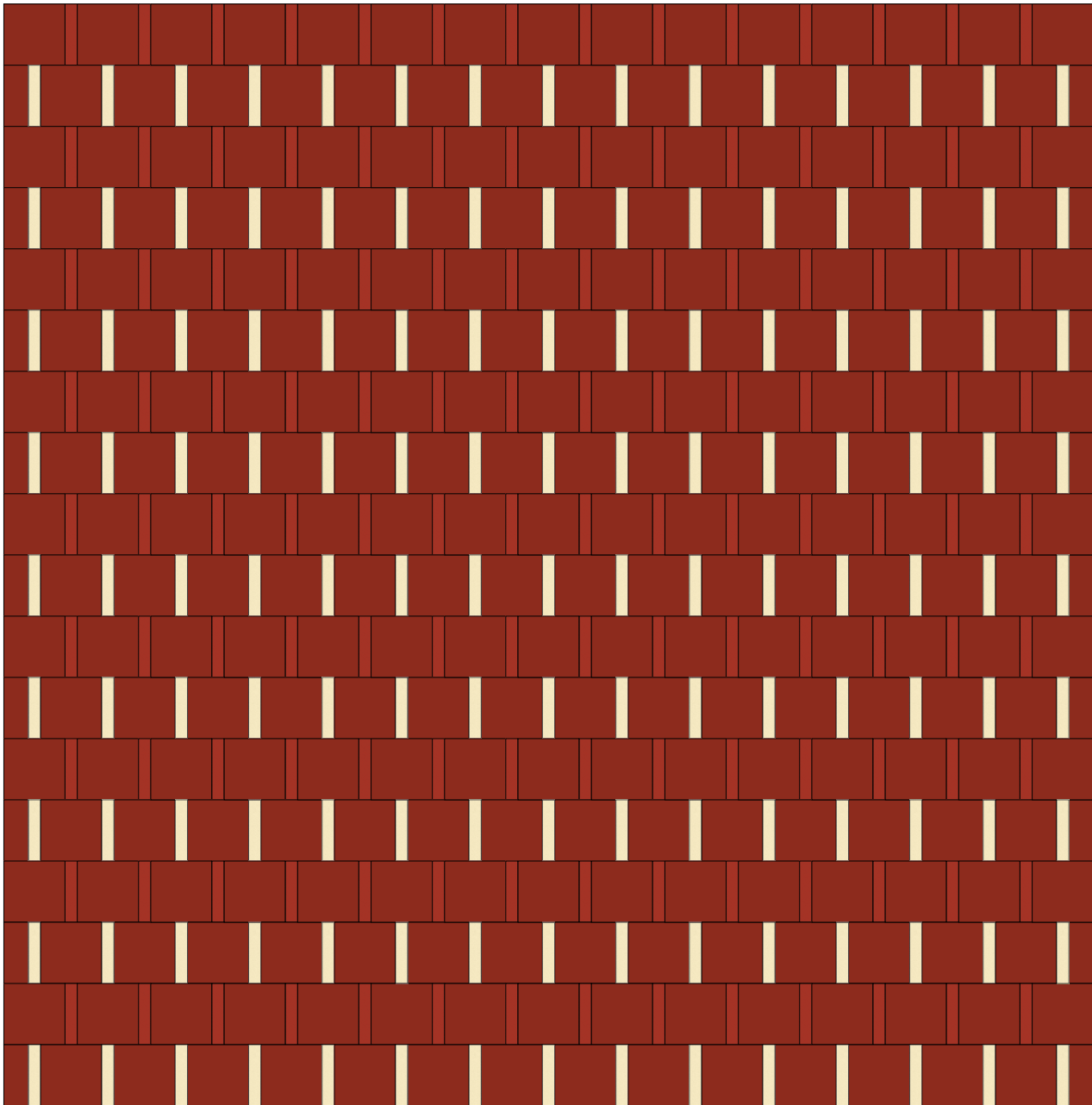


Le percentuali sono articolate su 1 mq di composizione.
Le quantità ricavate vengono arrotondate alla scatola completa.

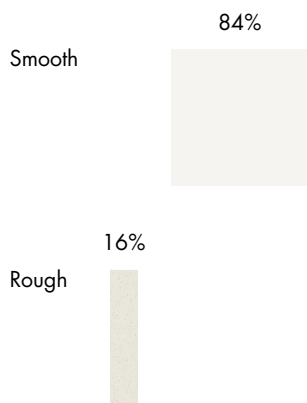
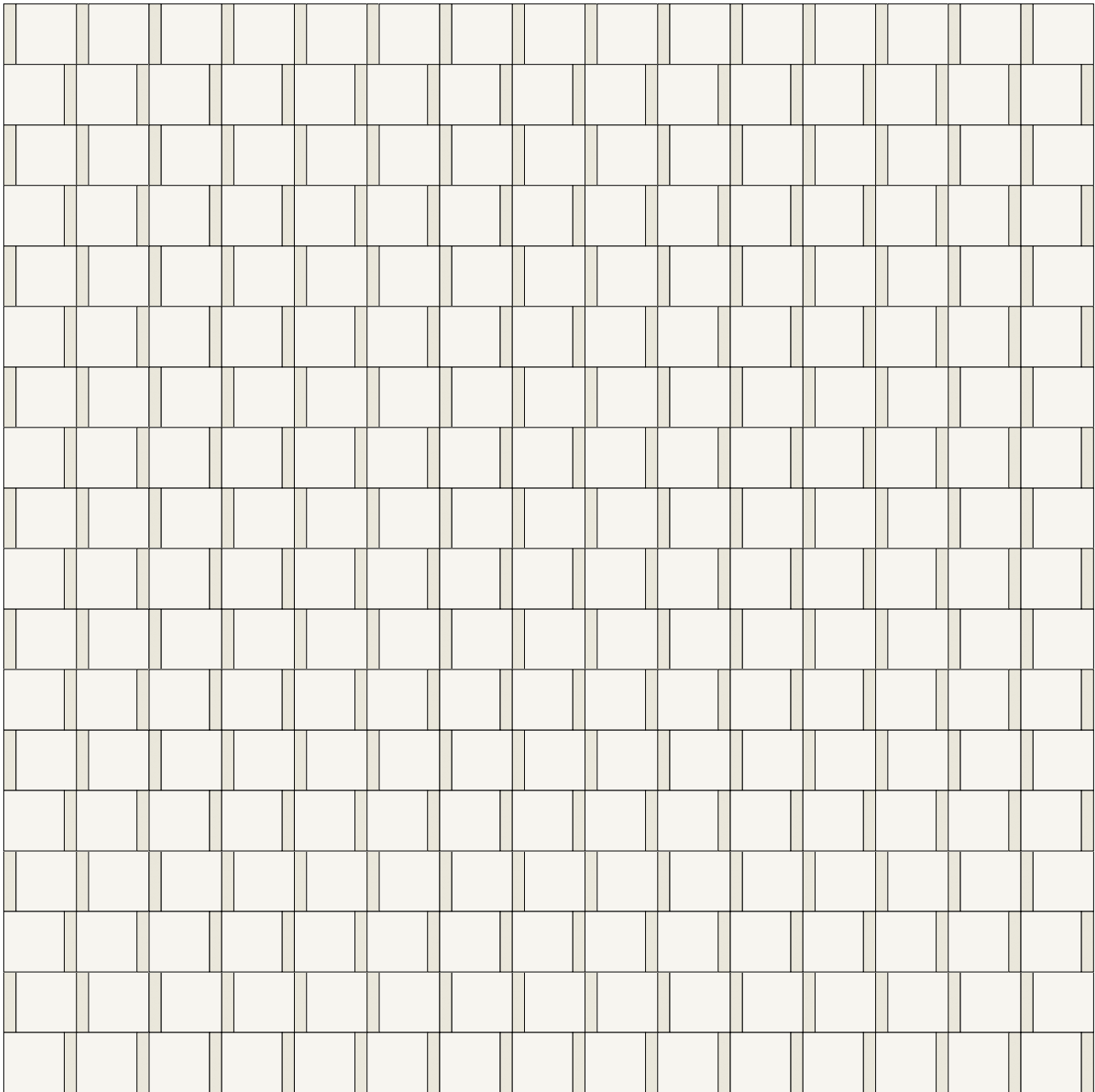


Le percentuali sono articolate su 1 mq di composizione.
Le quantità ricavate vengono arrotondate alla scatola completa.

The percentages are organised on a composition of 1 sqm.
The amounts obtained are rounded to the full box.

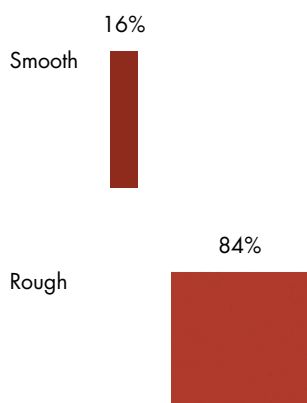
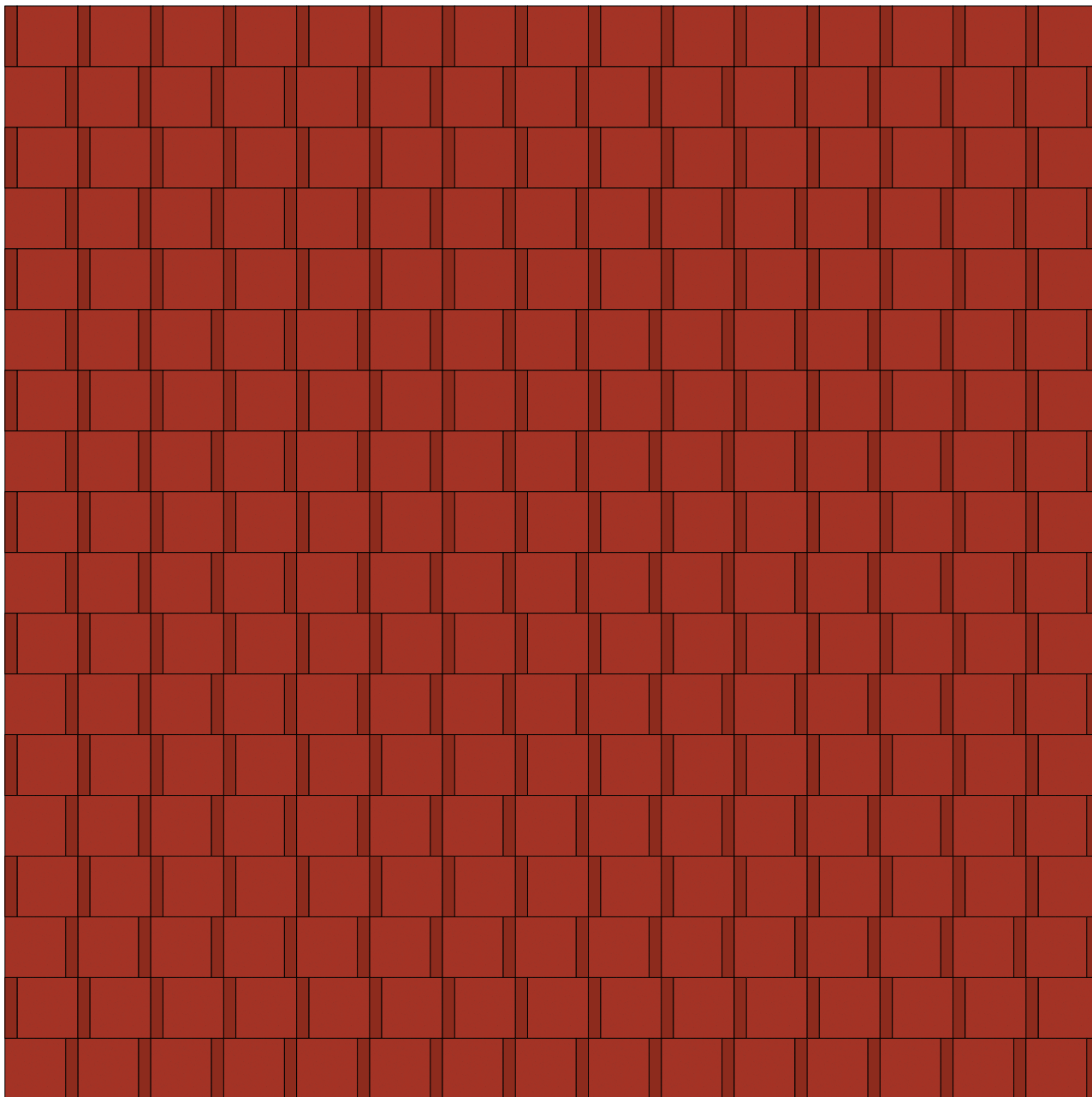


Le percentuali sono articolate su 1 mq di composizione.
Le quantità ricavate vengono arrotondate alla scatola completa.



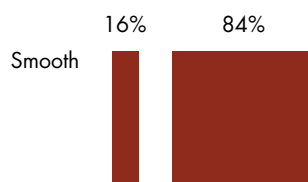
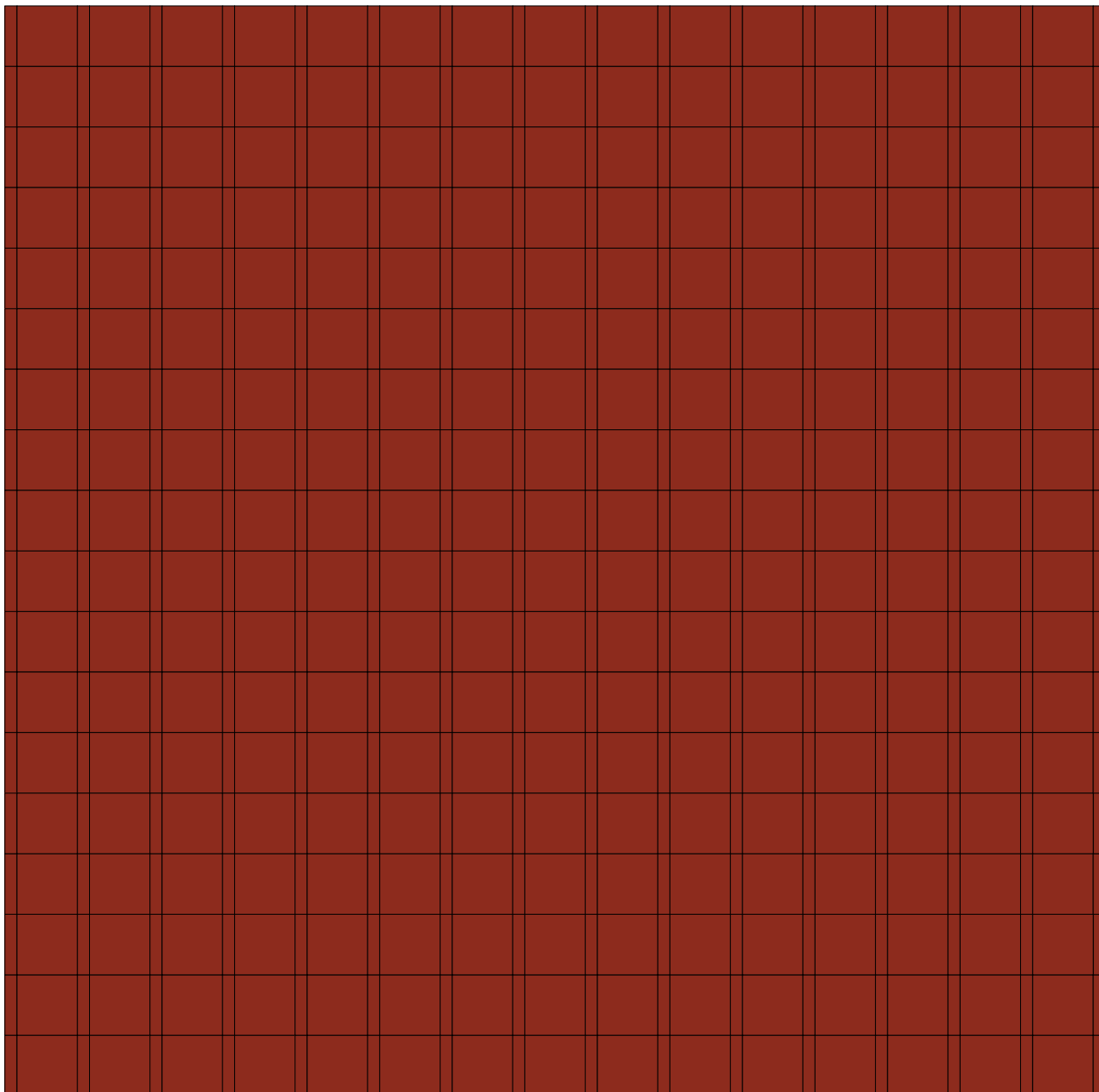
Le percentuali sono articolate su 1 mq di composizione.
Le quantità ricavate vengono arrotondate alla scatola completa.

The percentages are organised on a composition of 1 sqm.
The amounts obtained are rounded to the full box.



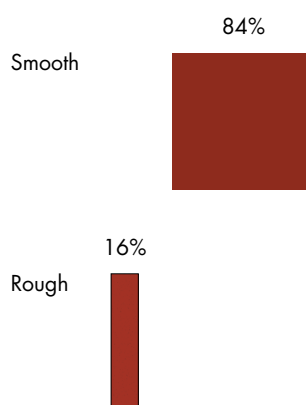
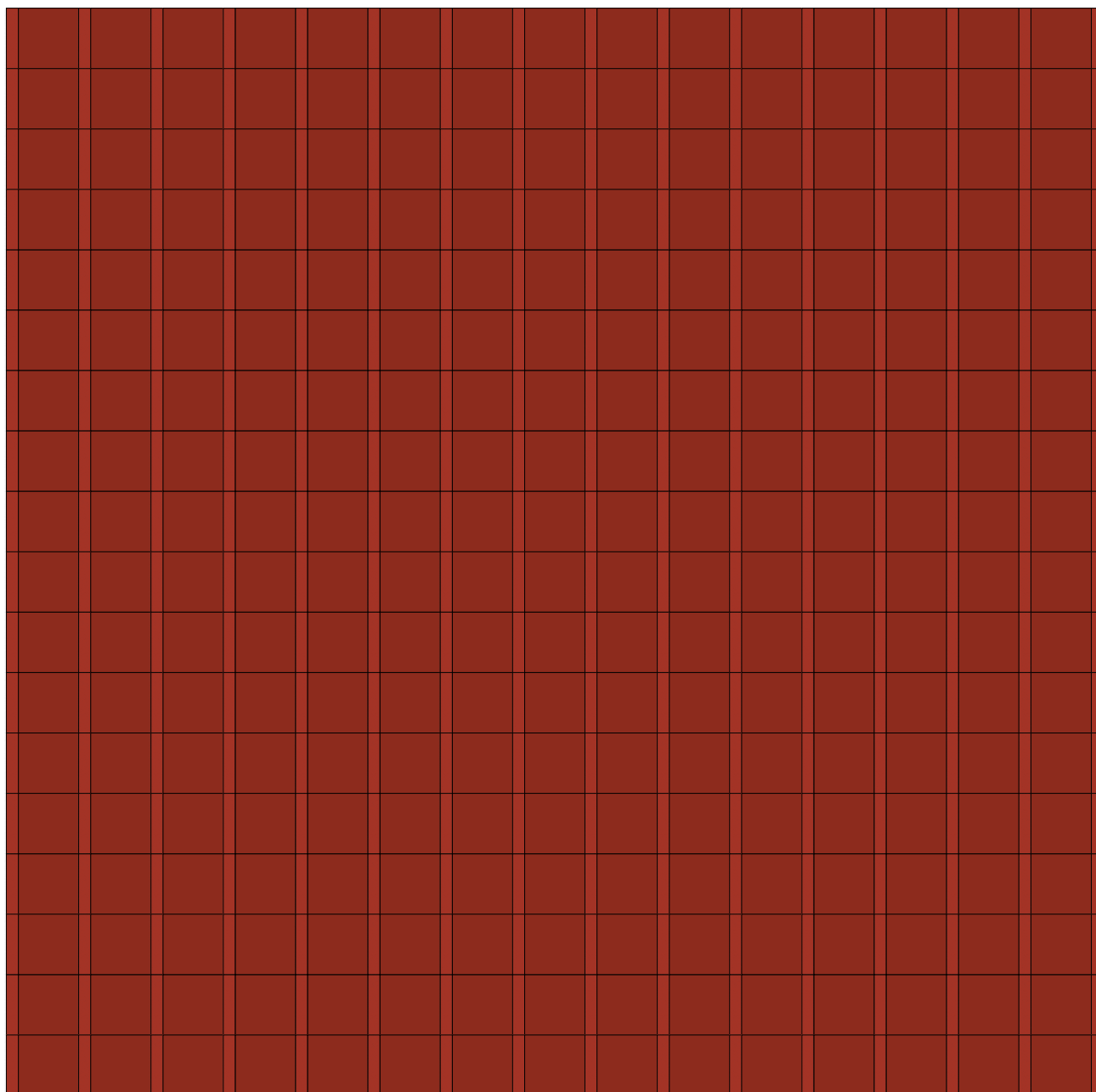
Le percentuali sono articolate su 1 mq di composizione.
Le quantità ricavate vengono arrotondate alla scatola completa.

The percentages are organised on a composition of 1 sqm.
The amounts obtained are rounded to the full box.



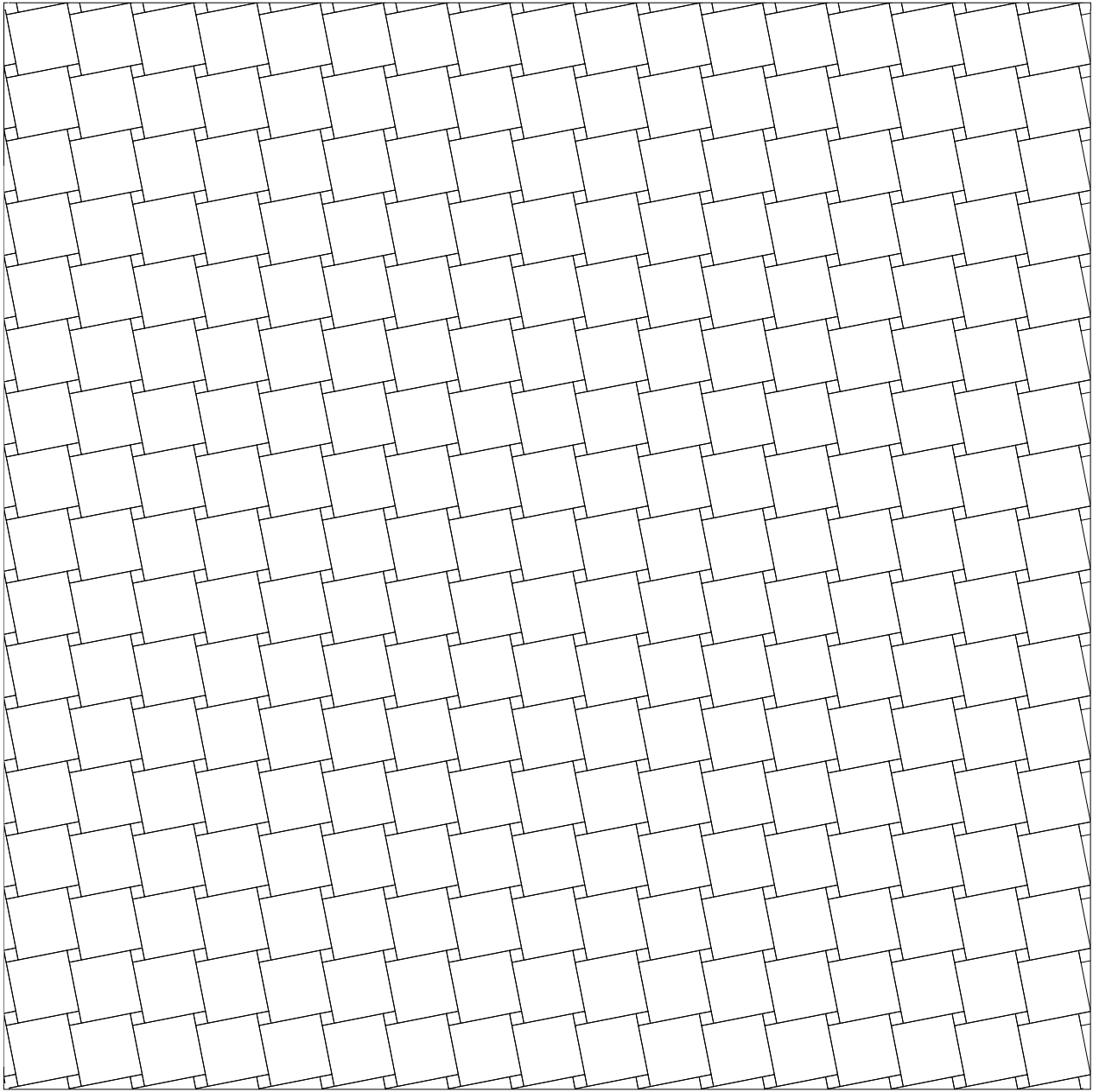
Le percentuali sono articolate su 1 mq di composizione.
Le quantità ricavate vengono arrotondate alla scatola completa.

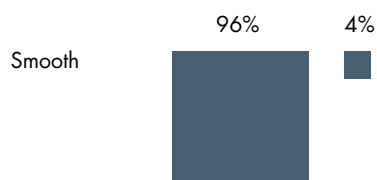
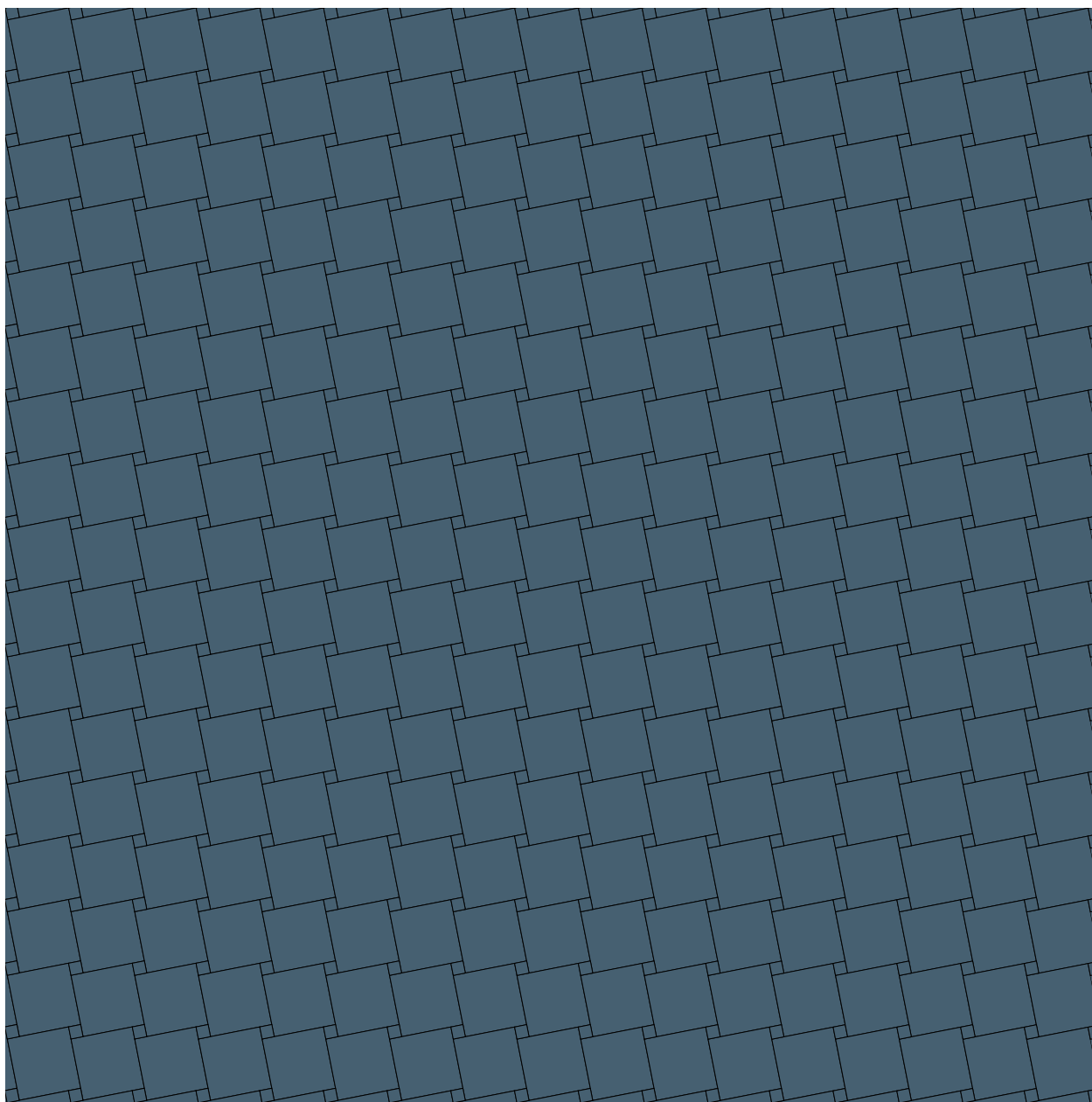
The percentages are organised on a composition of 1 sqm.
The amounts obtained are rounded to the full box.



Le percentuali sono articolate su 1 mq di composizione.
Le quantità ricavate vengono arrotondate alla scatola completa.

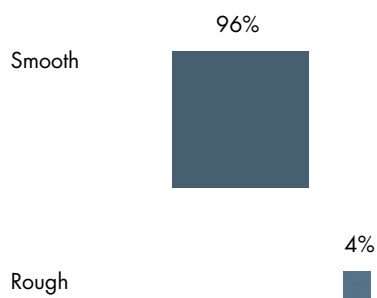
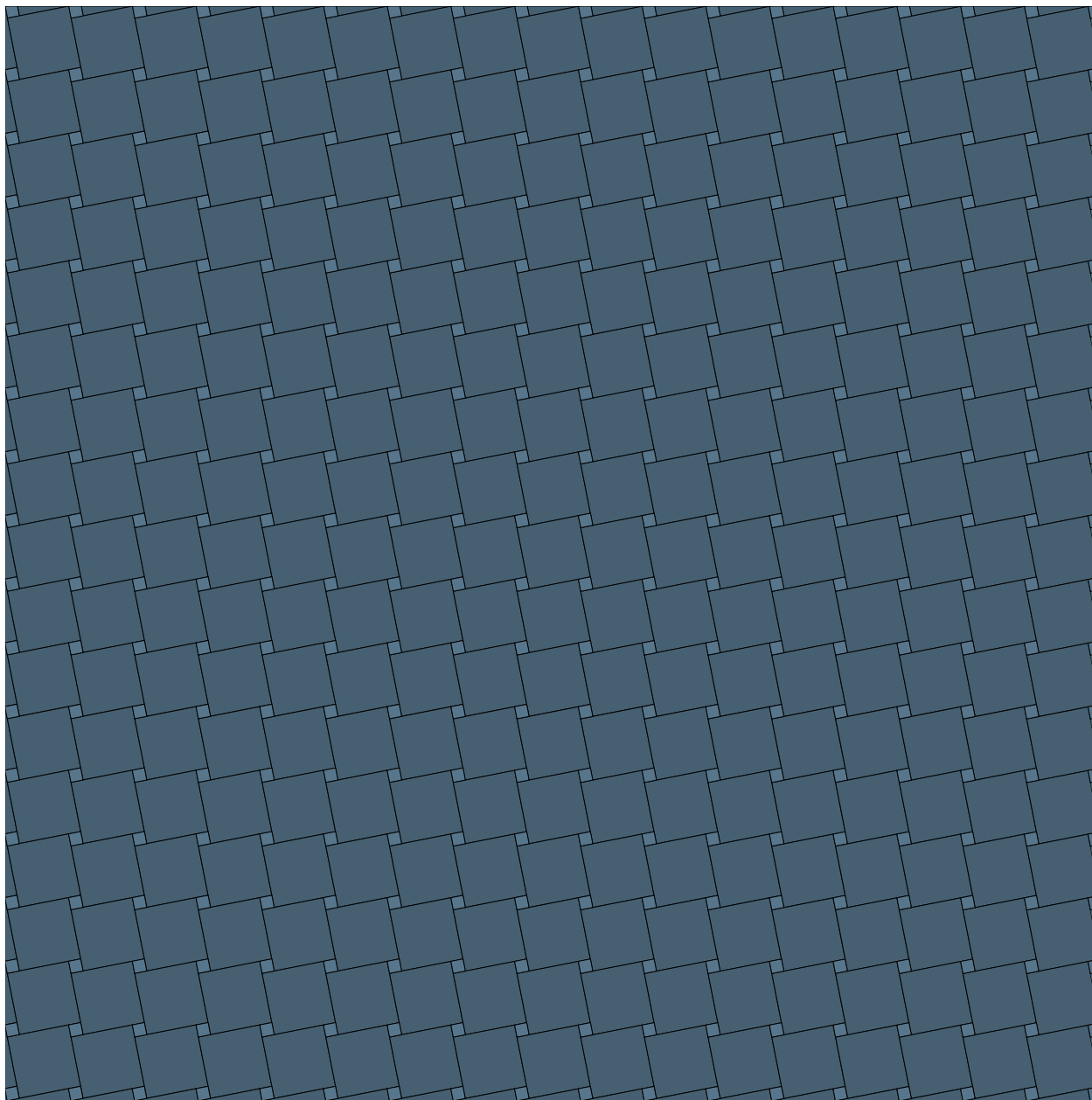
The percentages are organised on a composition of 1 sqm.
The amounts obtained are rounded to the full box.





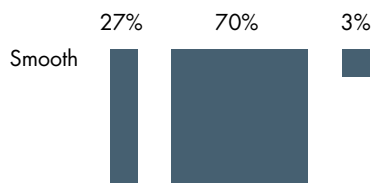
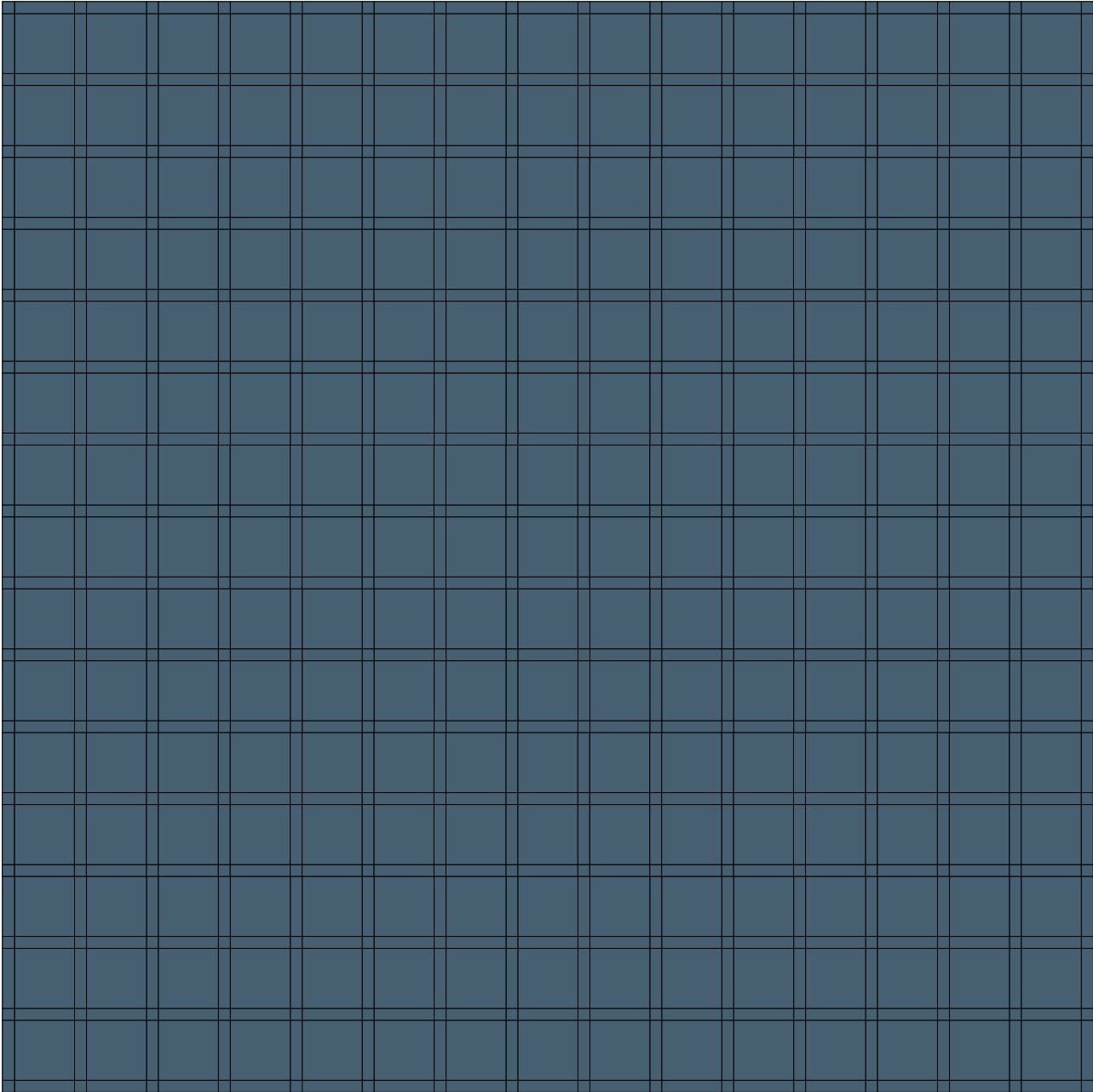
Le percentuali sono articolate su 1 mq di composizione.
Le quantità ricavate vengono arrotondate alla scatola completa.

The percentages are organised on a composition of 1 sqm.
The amounts obtained are rounded to the full box.



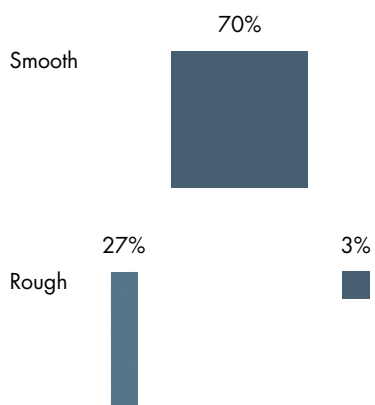
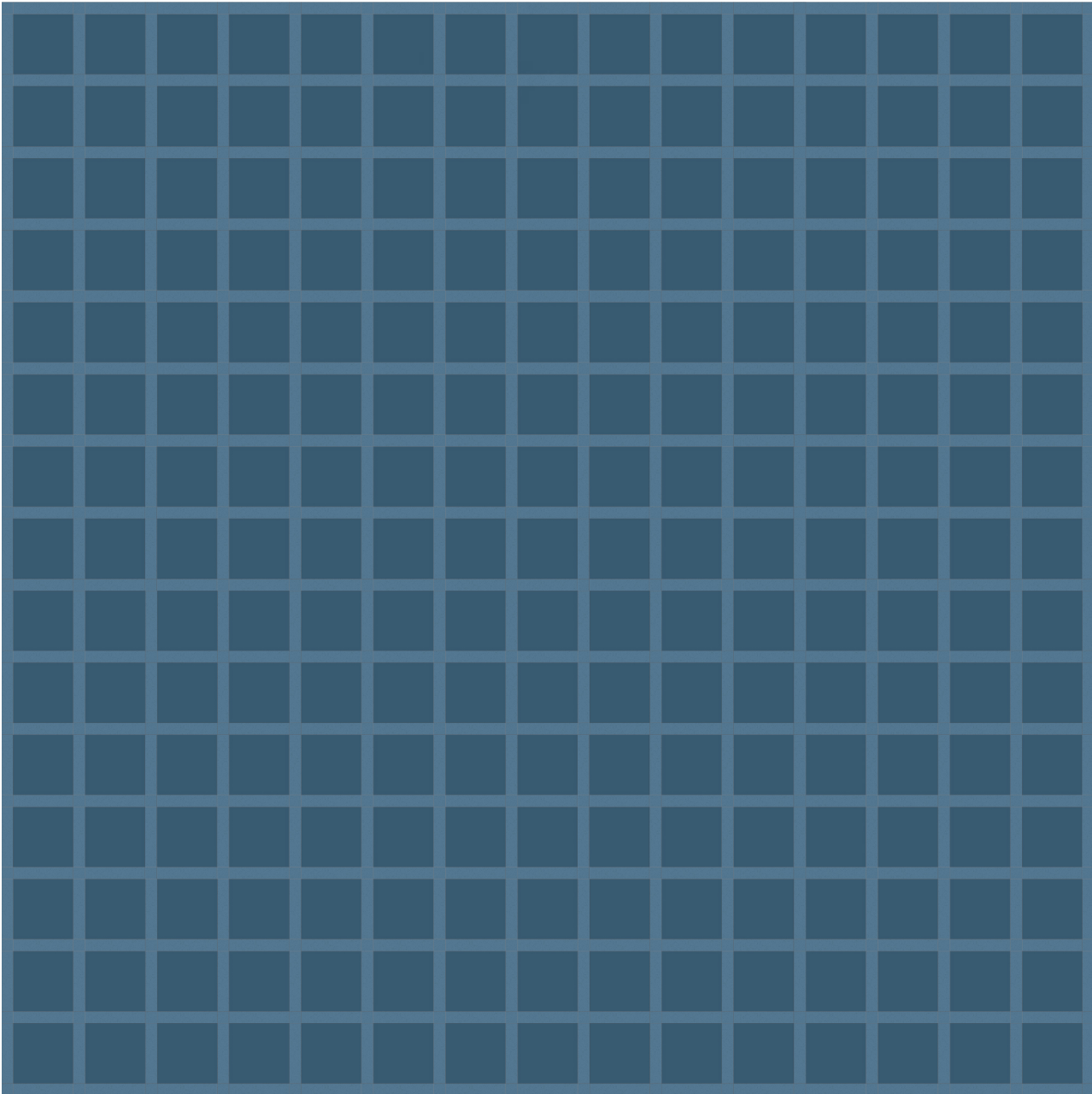
Le percentuali sono articolate su 1 mq di composizione.
Le quantità ricavate vengono arrotondate alla scatola completa.

The percentages are organised on a composition of 1 sqm.
The amounts obtained are rounded to the full box.



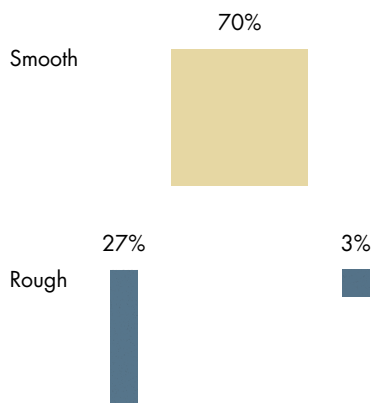
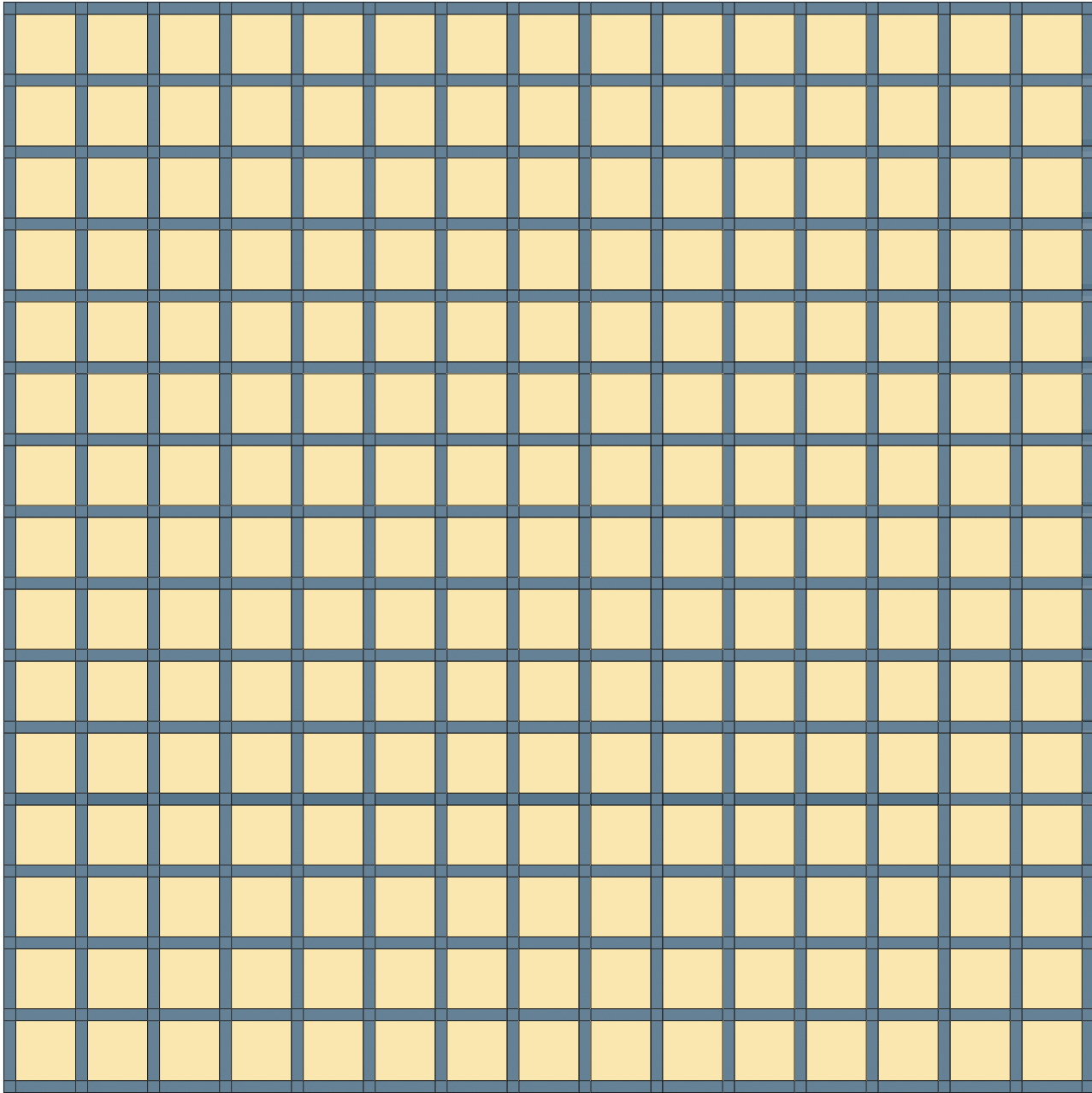
Le percentuali sono articolate su 1 mq di composizione.
Le quantità ricavate vengono arrotondate alla scatola completa.

The percentages are organised on a composition of 1 sqm.
The amounts obtained are rounded to the full box.



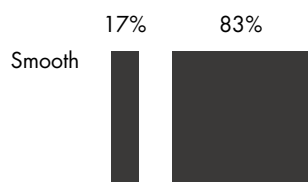
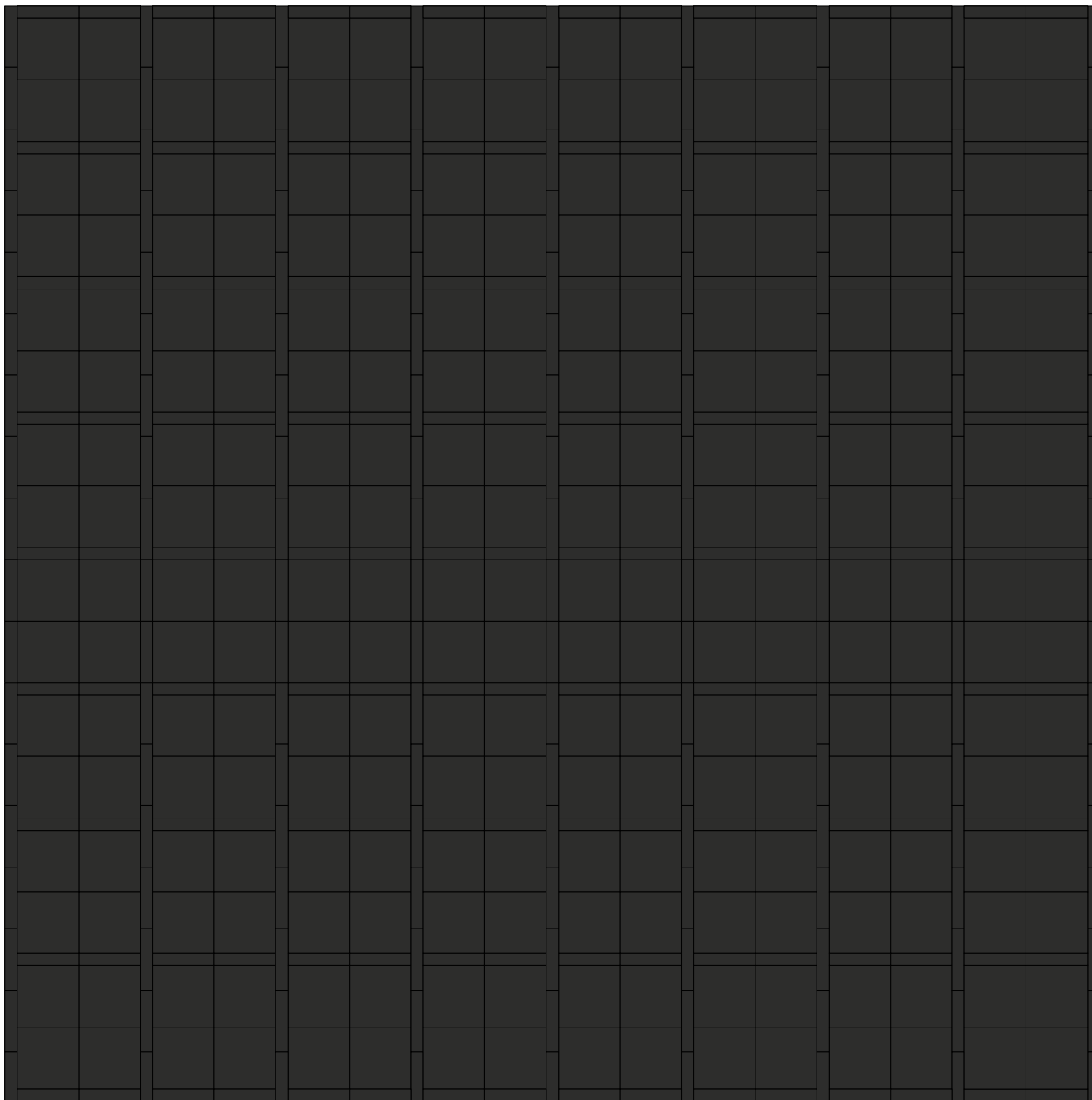
Le percentuali sono articolate su 1 mq di composizione.
Le quantità ricavate vengono arrotondate alla scatola completa.

The percentages are organised on a composition of 1 sqm.
The amounts obtained are rounded to the full box.



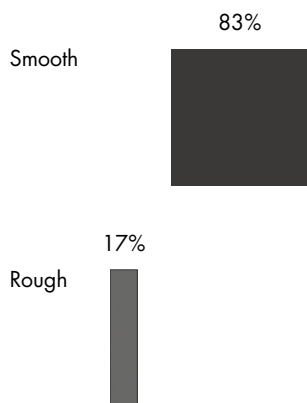
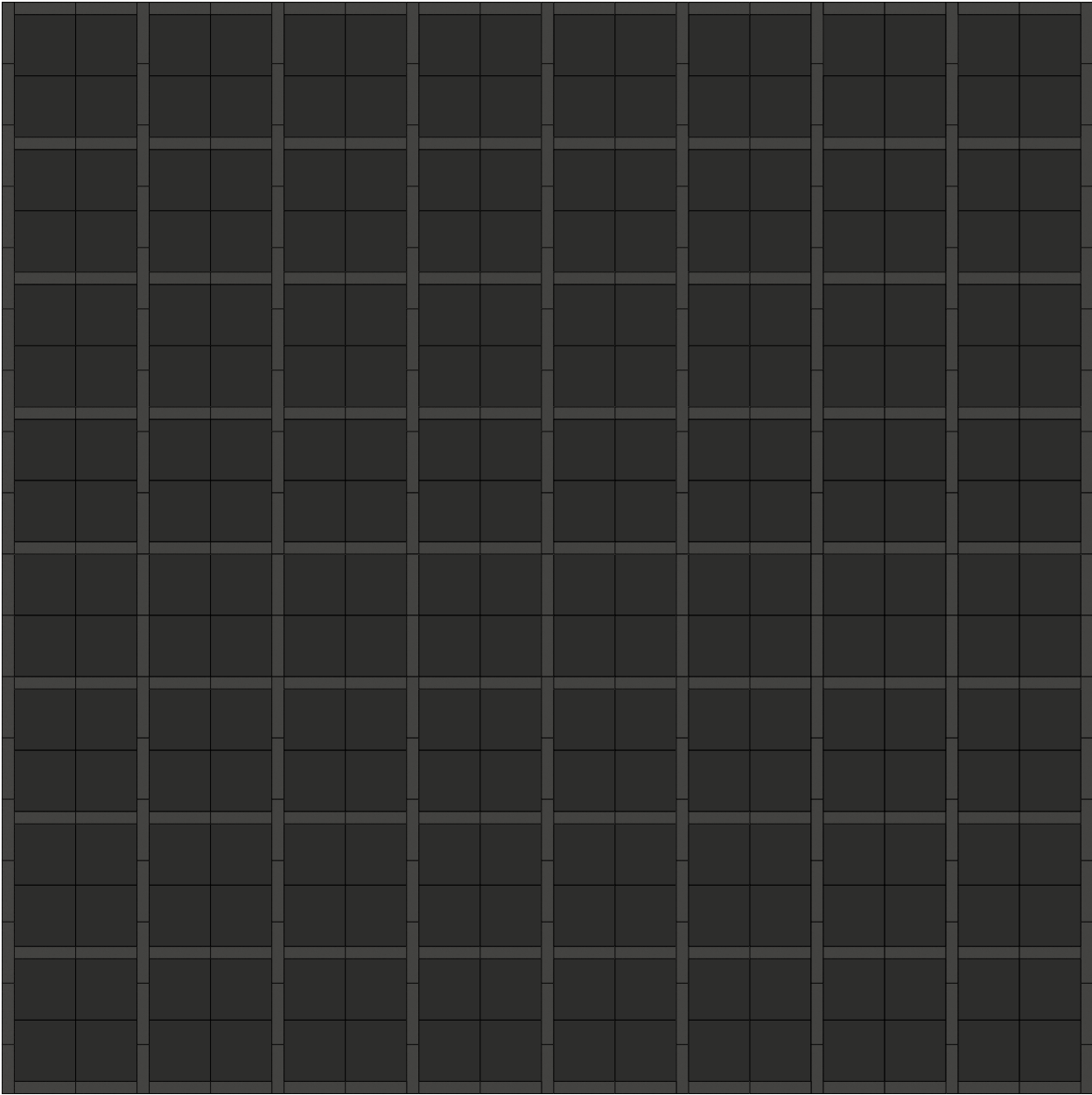
Le percentuali sono articolate su 1 mq di composizione.
Le quantità ricavate vengono arrotondate alla scatola completa.

The percentages are organised on a composition of 1 sqm.
The amounts obtained are rounded to the full box.



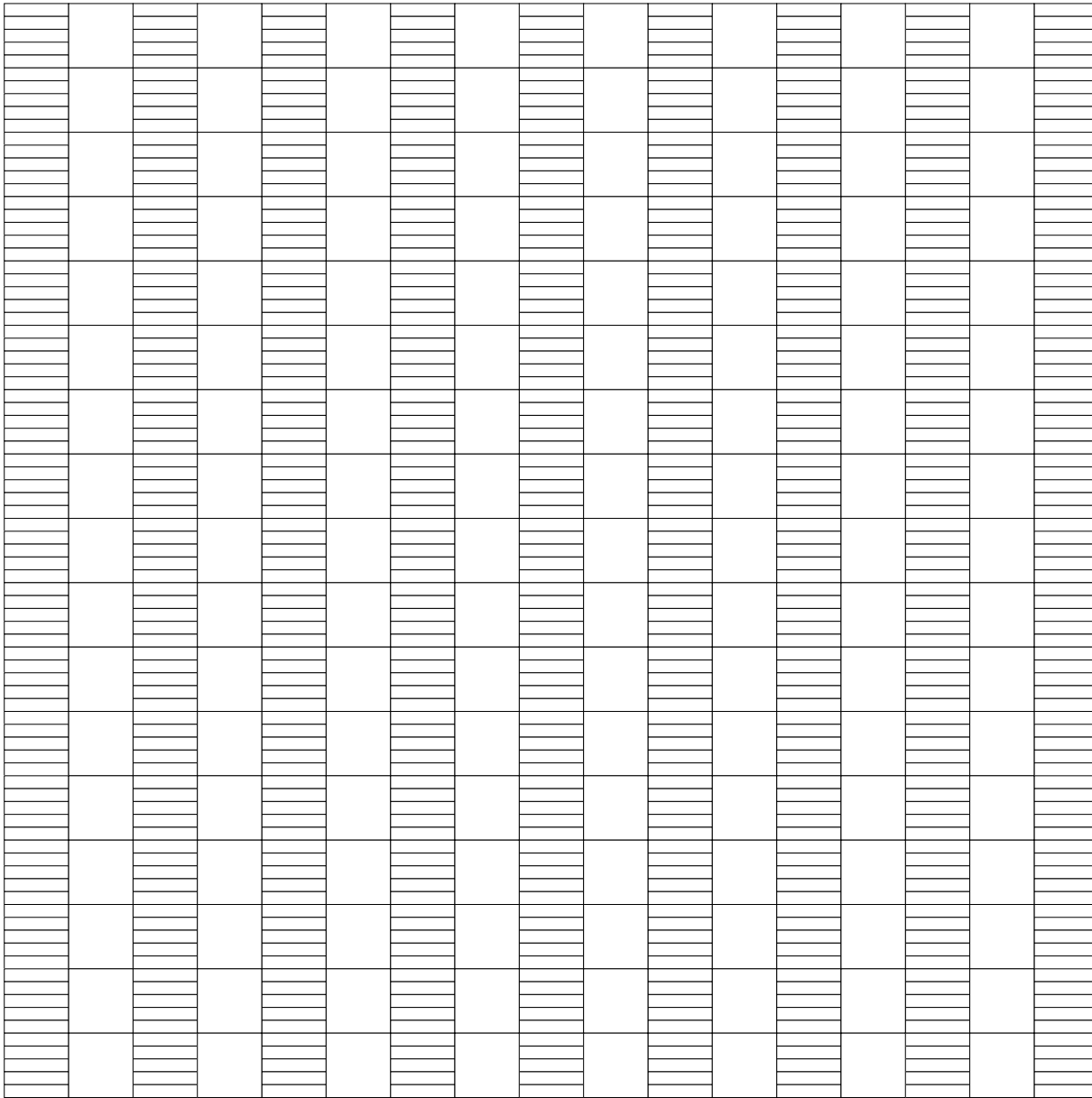
Le percentuali sono articolate su 1 mq di composizione.
Le quantità ricavate vengono arrotondate alla scatola completa.

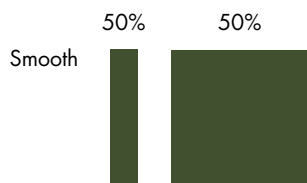
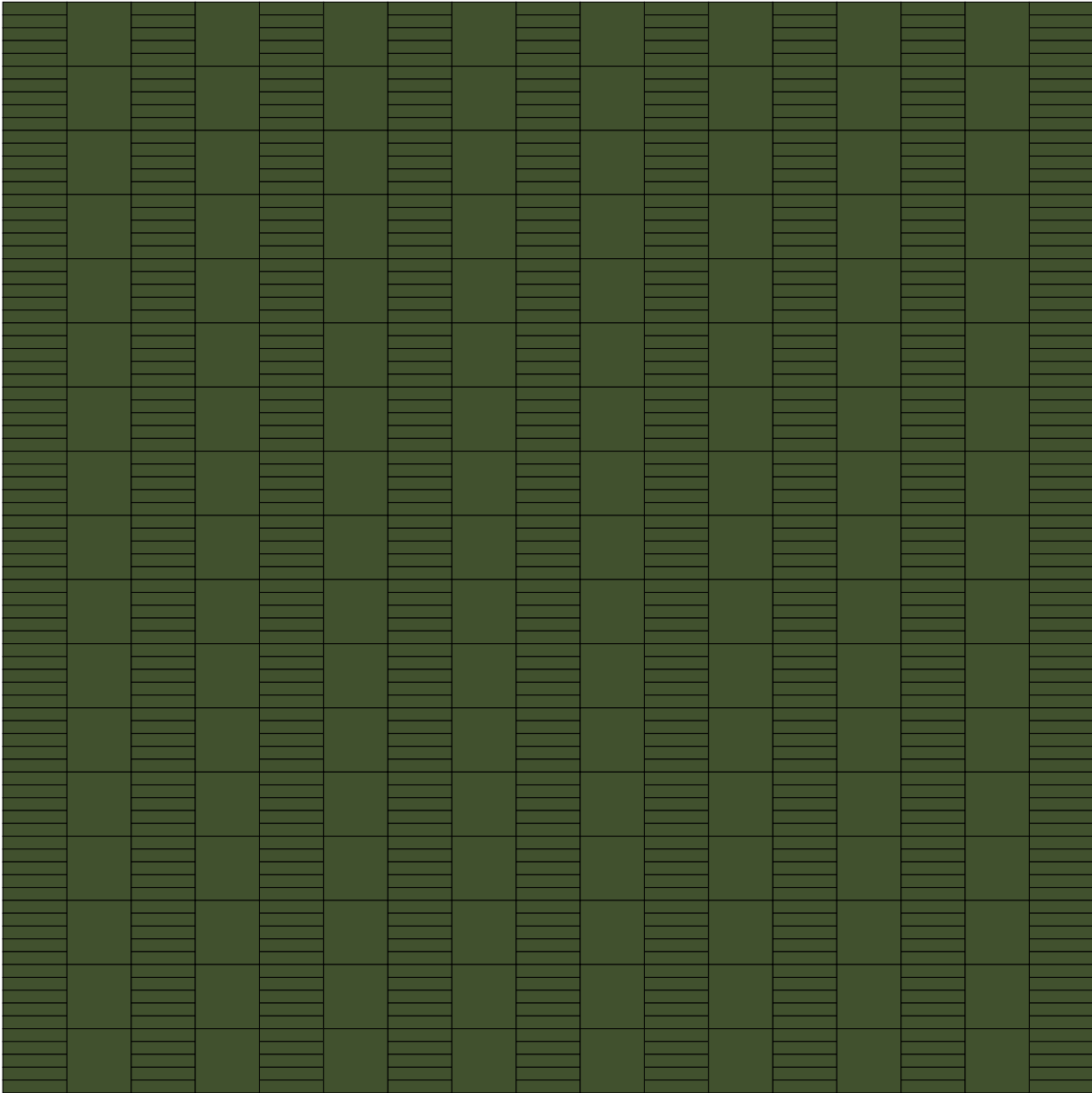
The percentages are organised on a composition of 1 sqm.
The amounts obtained are rounded to the full box.



Le percentuali sono articolate su 1 mq di composizione.
Le quantità ricavate vengono arrotondate alla scatola completa.

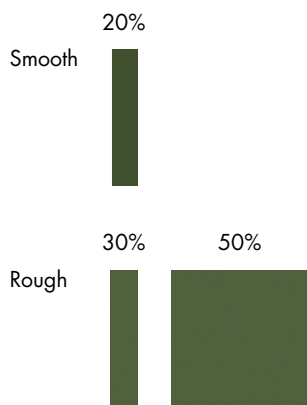
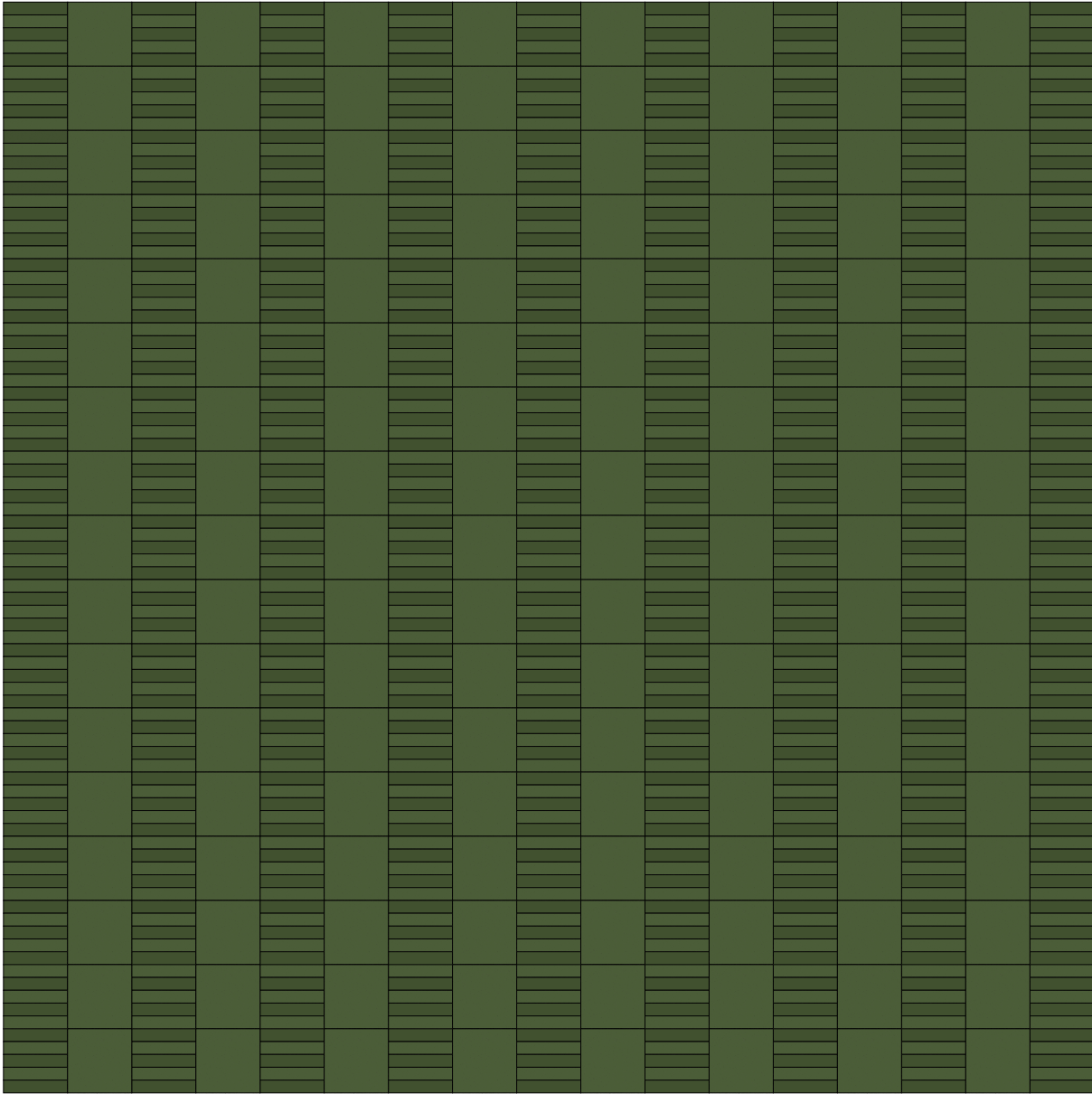
The percentages are organised on a composition of 1 sqm.
The amounts obtained are rounded to the full box.





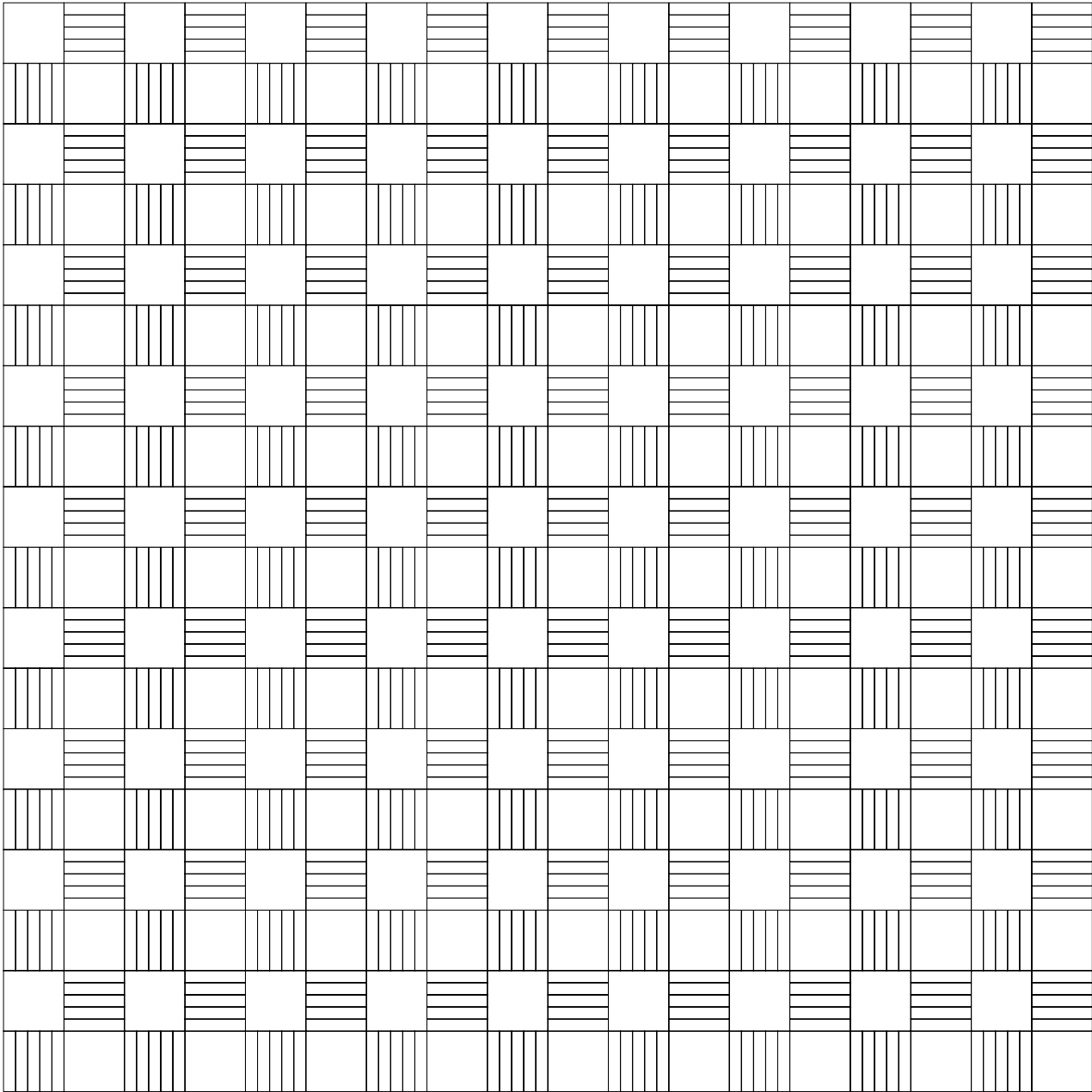
Le percentuali sono articolate su 1 mq di composizione.
Le quantità ricavate vengono arrotondate alla scatola completa.

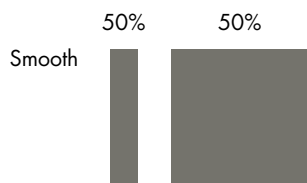
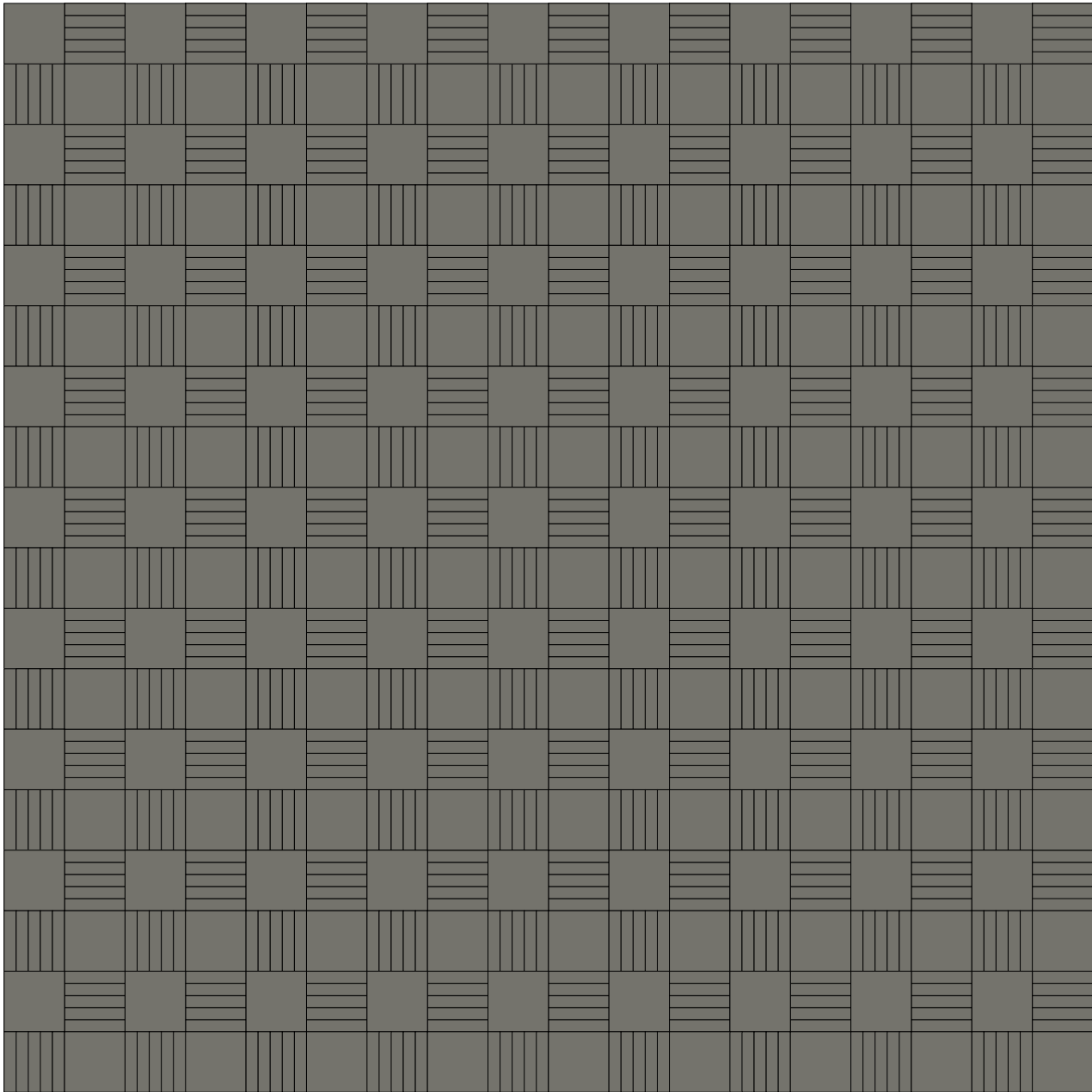
The percentages are organised on a composition of 1 sqm.
The amounts obtained are rounded to the full box.



Le percentuali sono articolate su 1 mq di composizione.
Le quantità ricavate vengono arrotondate alla scatola completa.

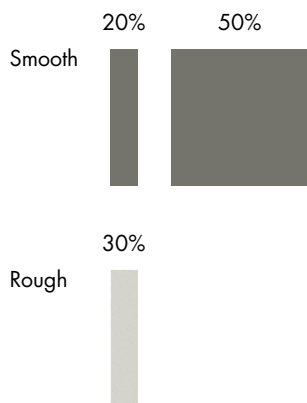
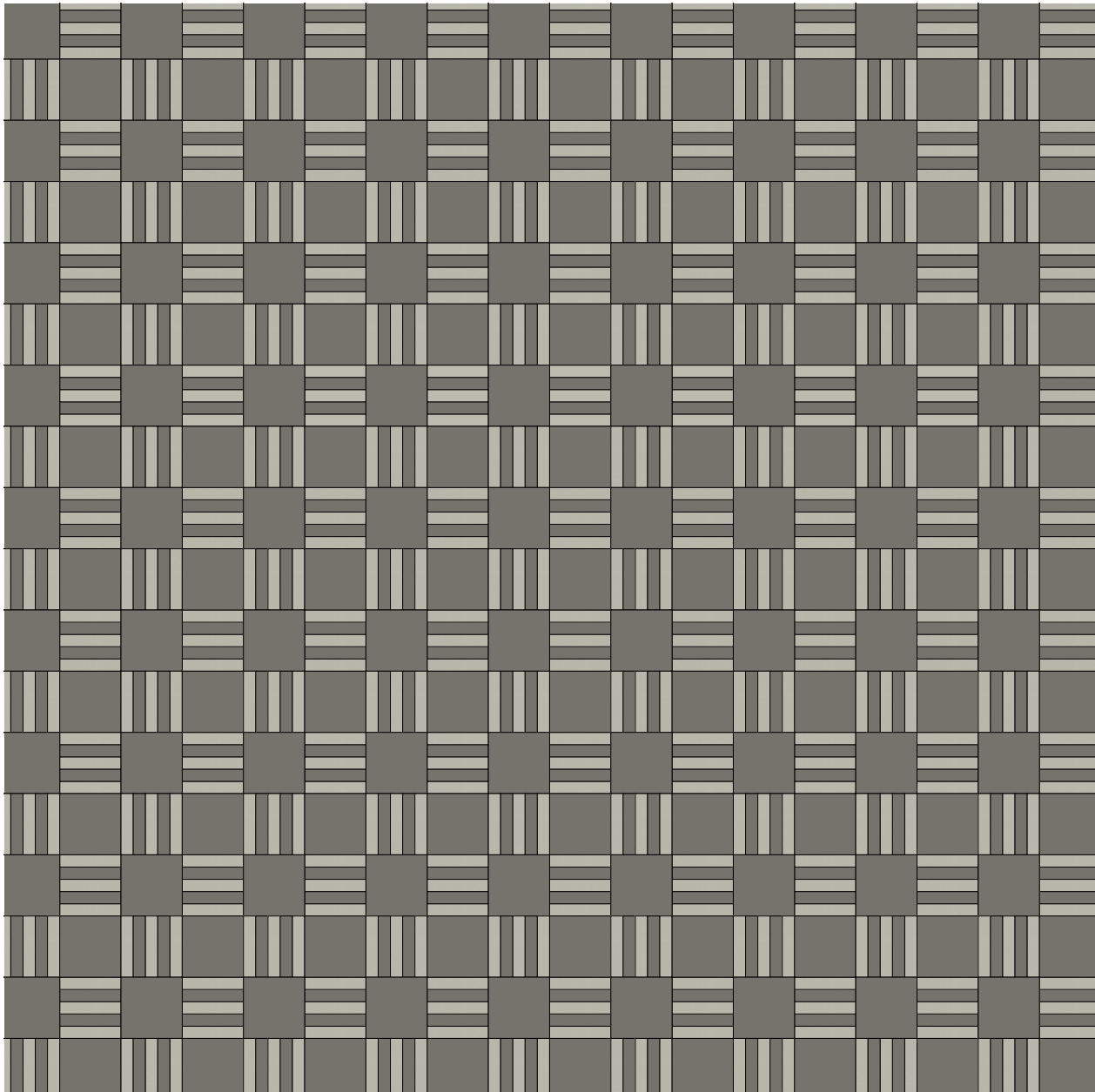
The percentages are organised on a composition of 1 sqm.
The amounts obtained are rounded to the full box.





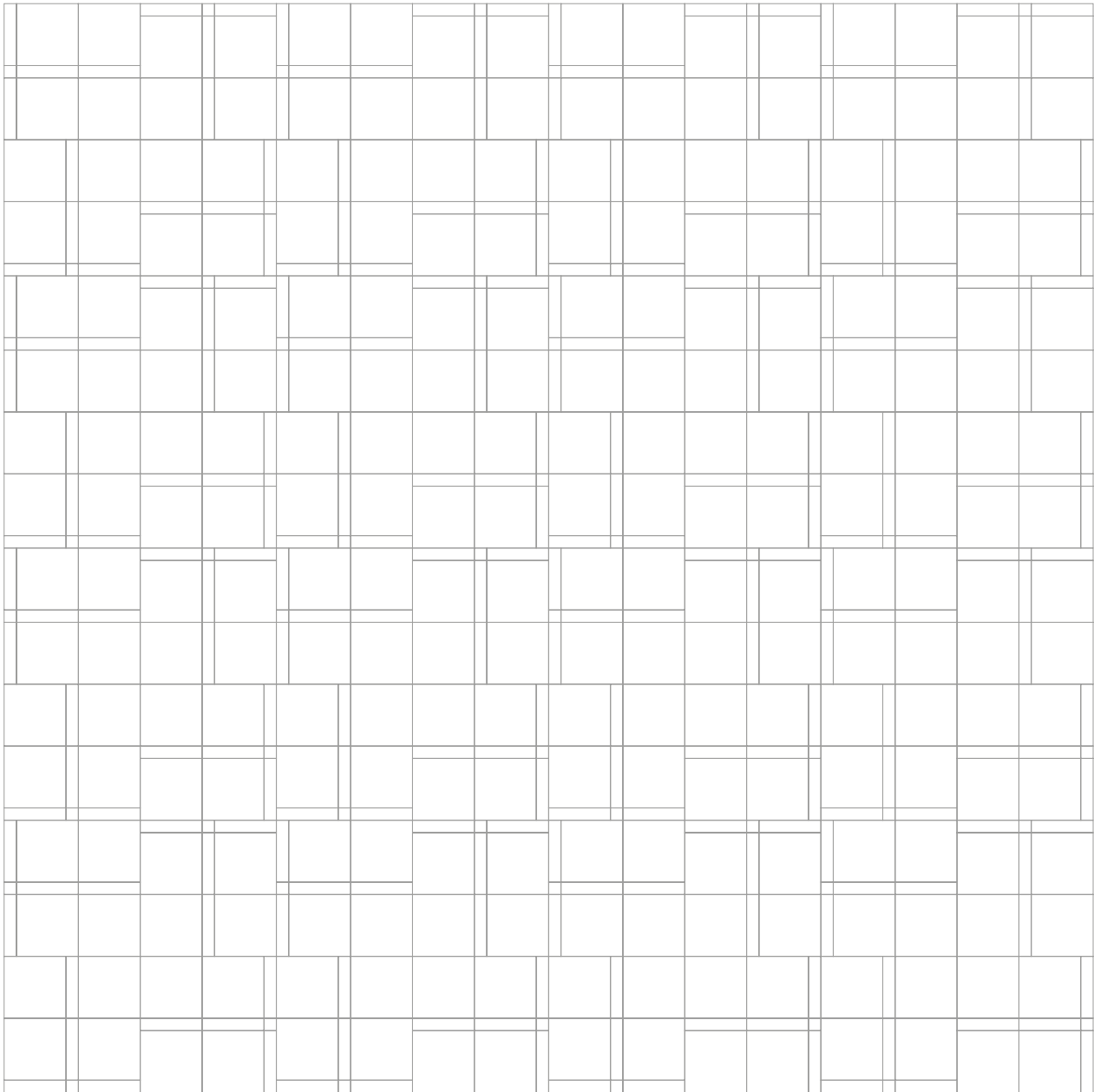
Le percentuali sono articolate su 1 mq di composizione.
Le quantità ricavate vengono arrotondate alla scatola completa.

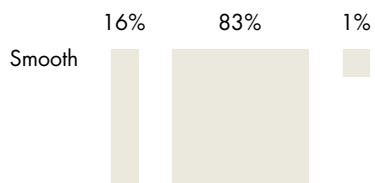
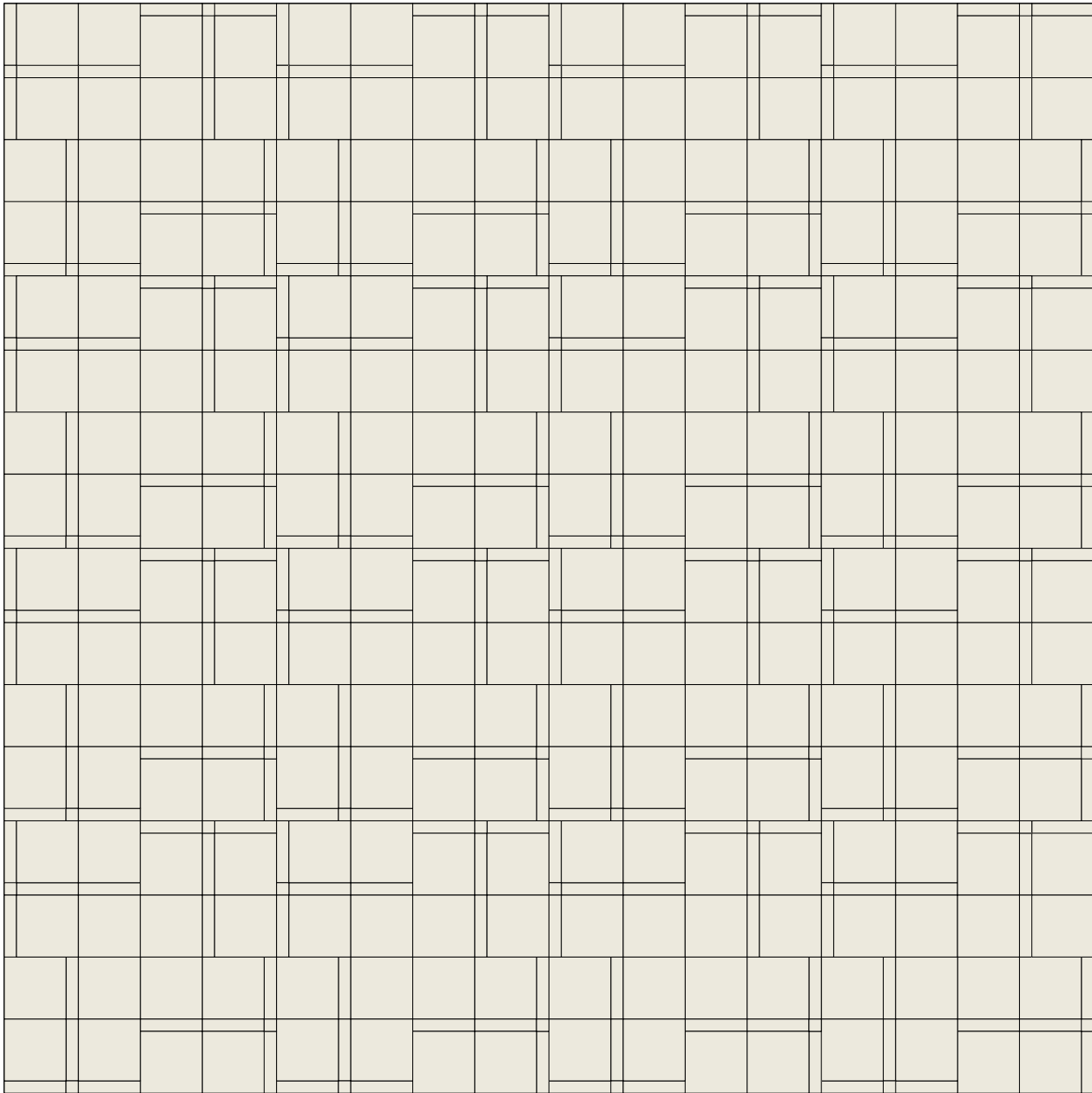
The percentages are organised on a composition of 1 sqm.
The amounts obtained are rounded to the full box.



Le percentuali sono articolate su 1 mq di composizione.
Le quantità ricavate vengono arrotondate alla scatola completa.

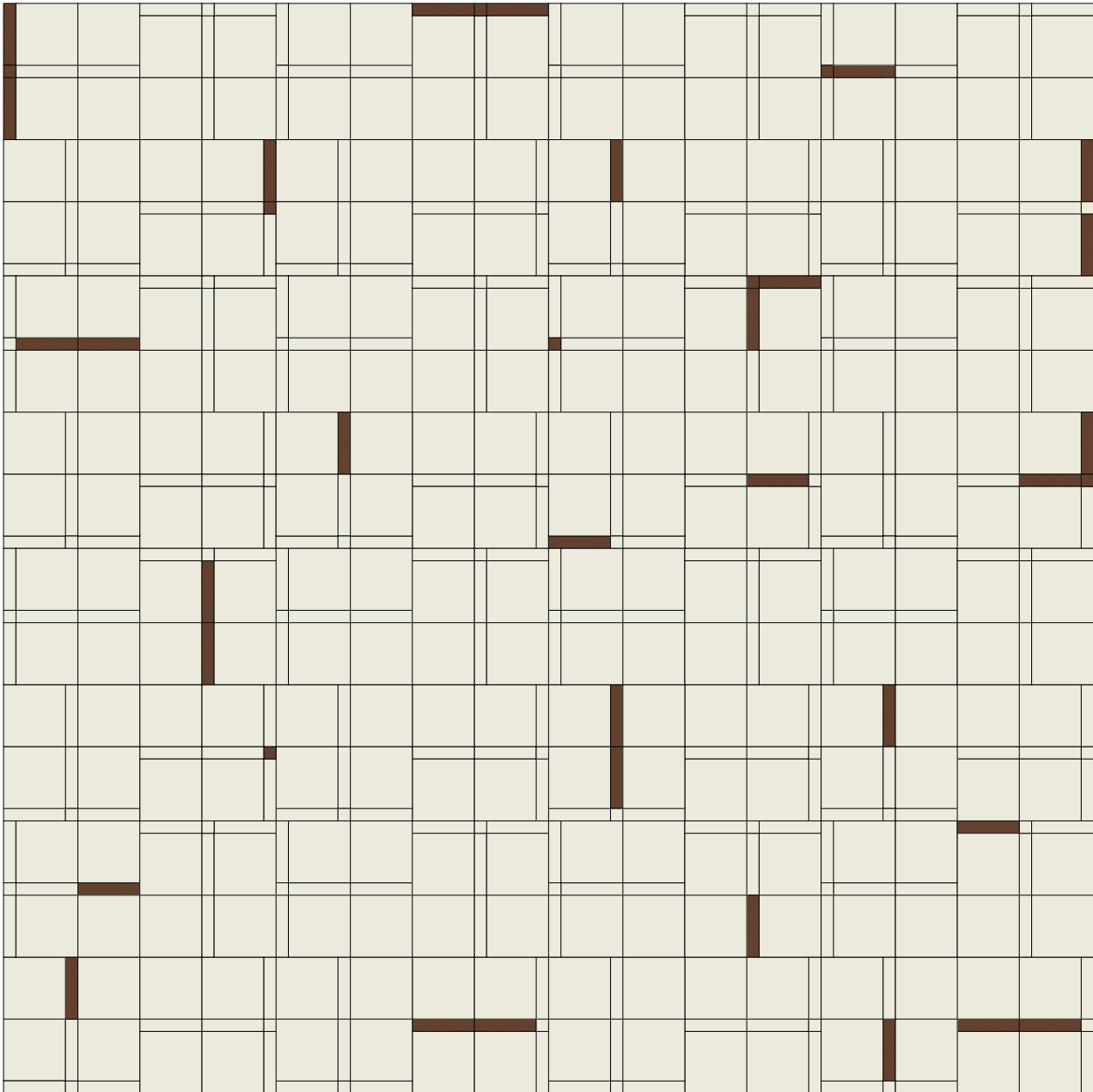
The percentages are organised on a composition of 1 sqm.
The amounts obtained are rounded to the full box.



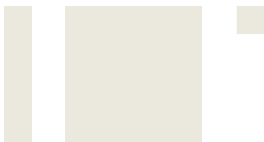


Le percentuali sono articolate su 1 mq di composizione.
Le quantità ricavate vengono arrotondate alla scatola completa.

The percentages are organised on a composition of 1 sqm.
The amounts obtained are rounded to the full box.



Smooth

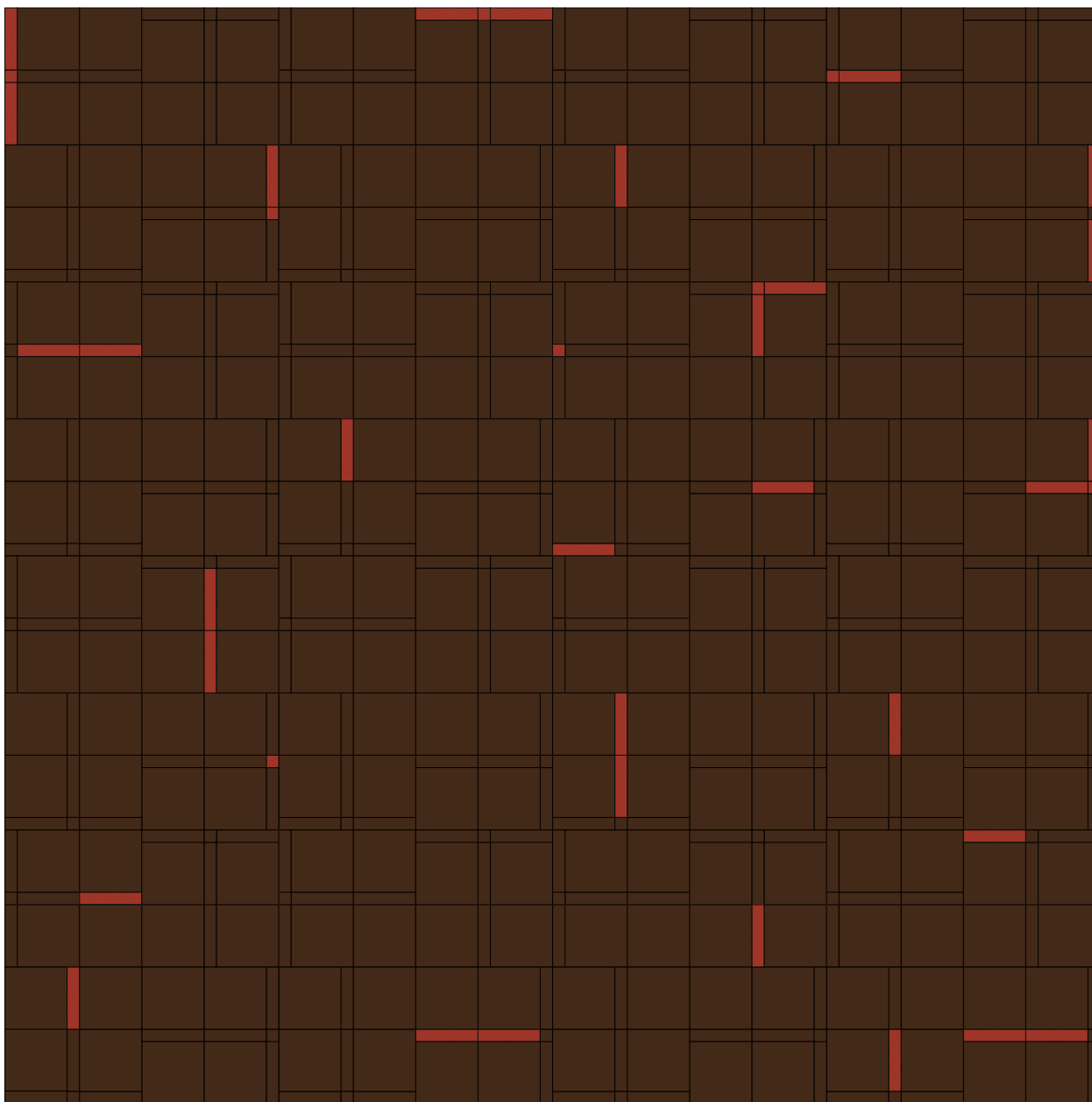


Rough



Il seguente schema di posa comporta un'alternanza di texture e di colori randomica, per cui non è possibile calcolare la quantità dei singoli articoli per metro quadro.

The suggested layout features a random alternation of textures and colours, so the quantity of each featured element can't be calculated per squared meter.



Smooth



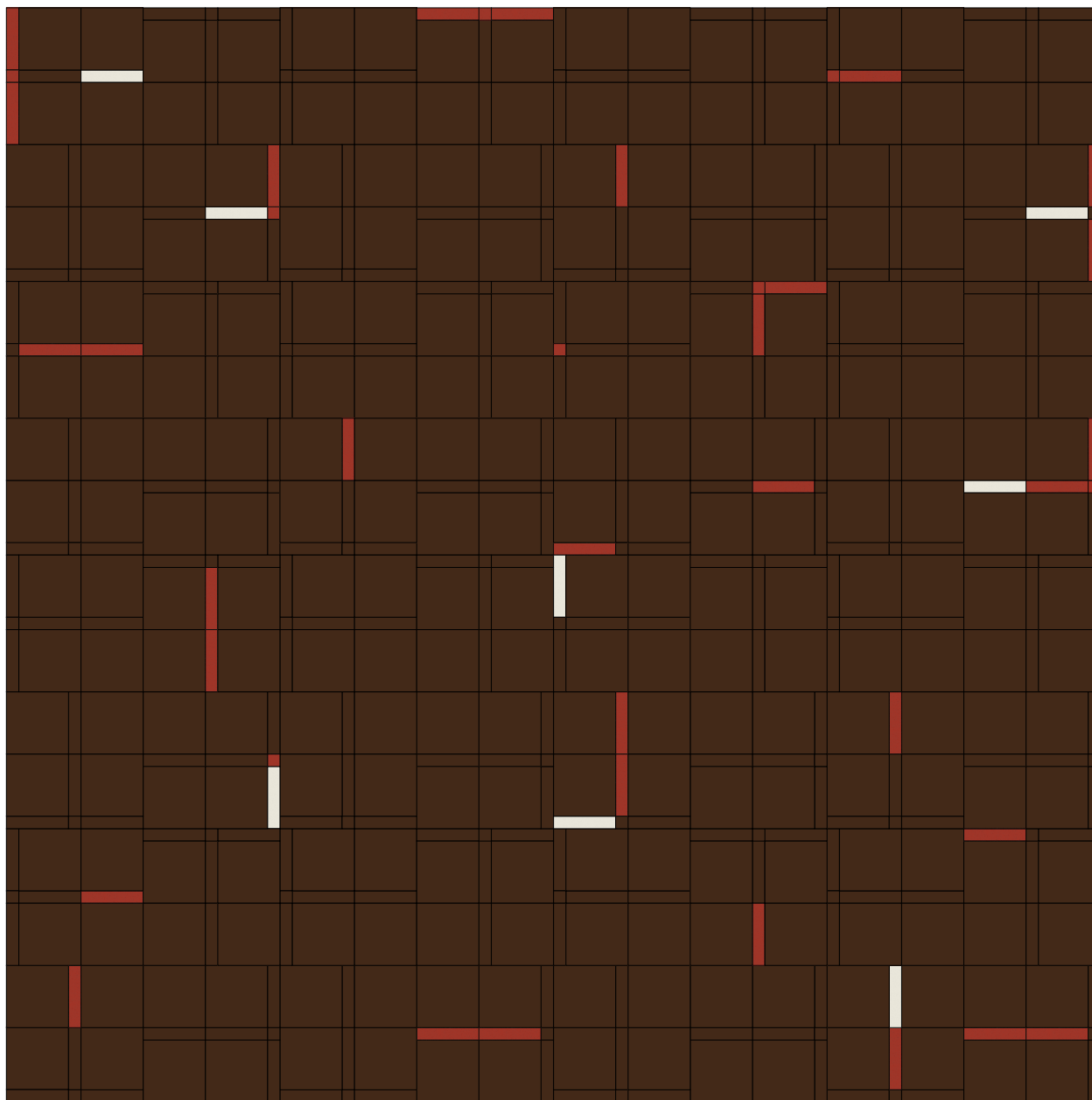
Rough



Mutina

Il seguente schema di posa comporta un'alternanza di texture e di colori randomica, per cui non è possibile calcolare la quantità dei singoli articoli per metro quadro.

The suggested layout features a random alternation of textures and colours, so the quantity of each featured element can't be calculated per squared meter.



Smooth

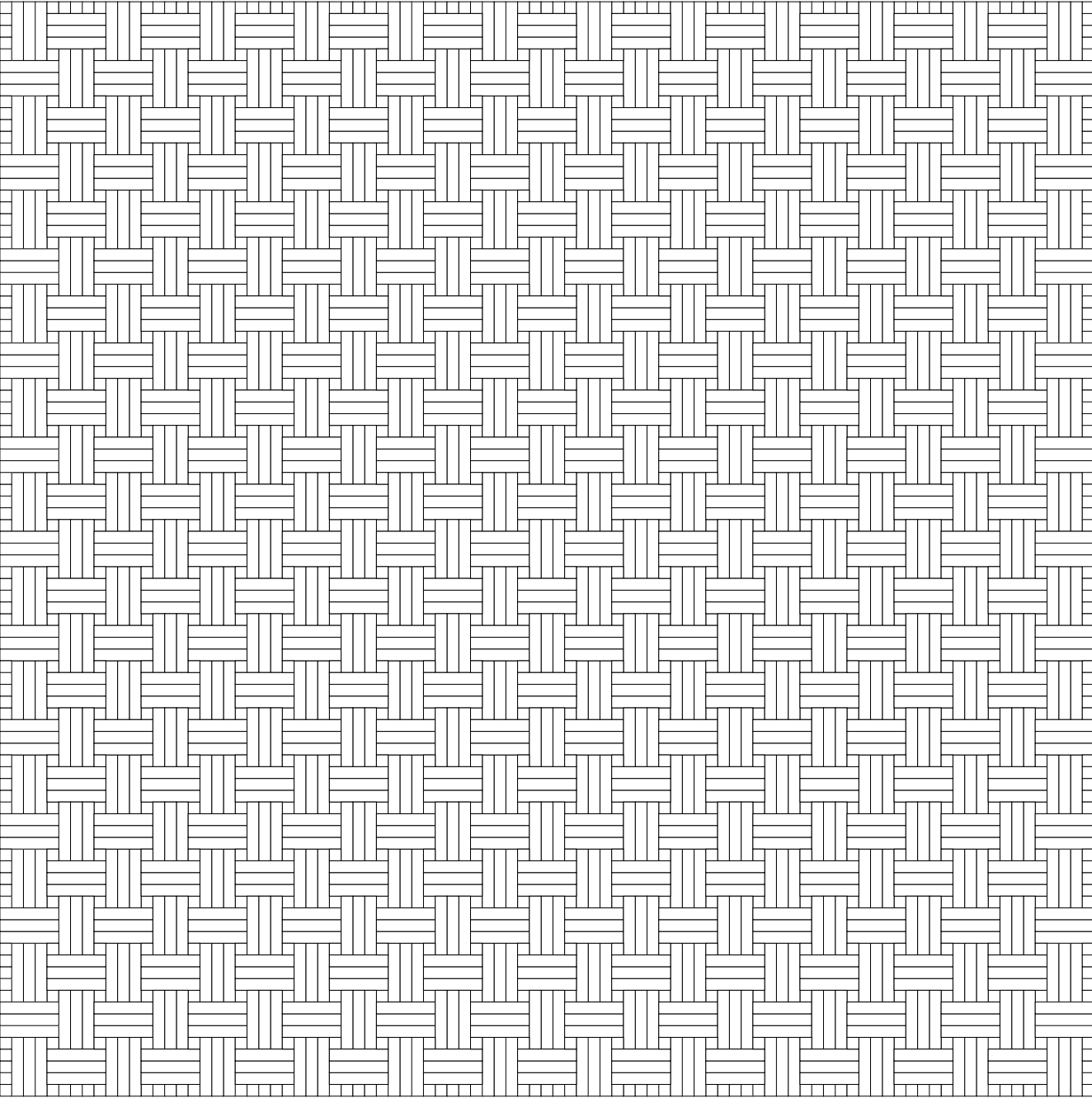


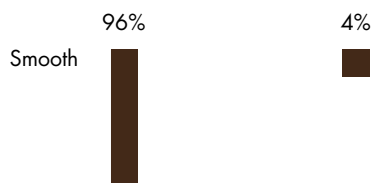
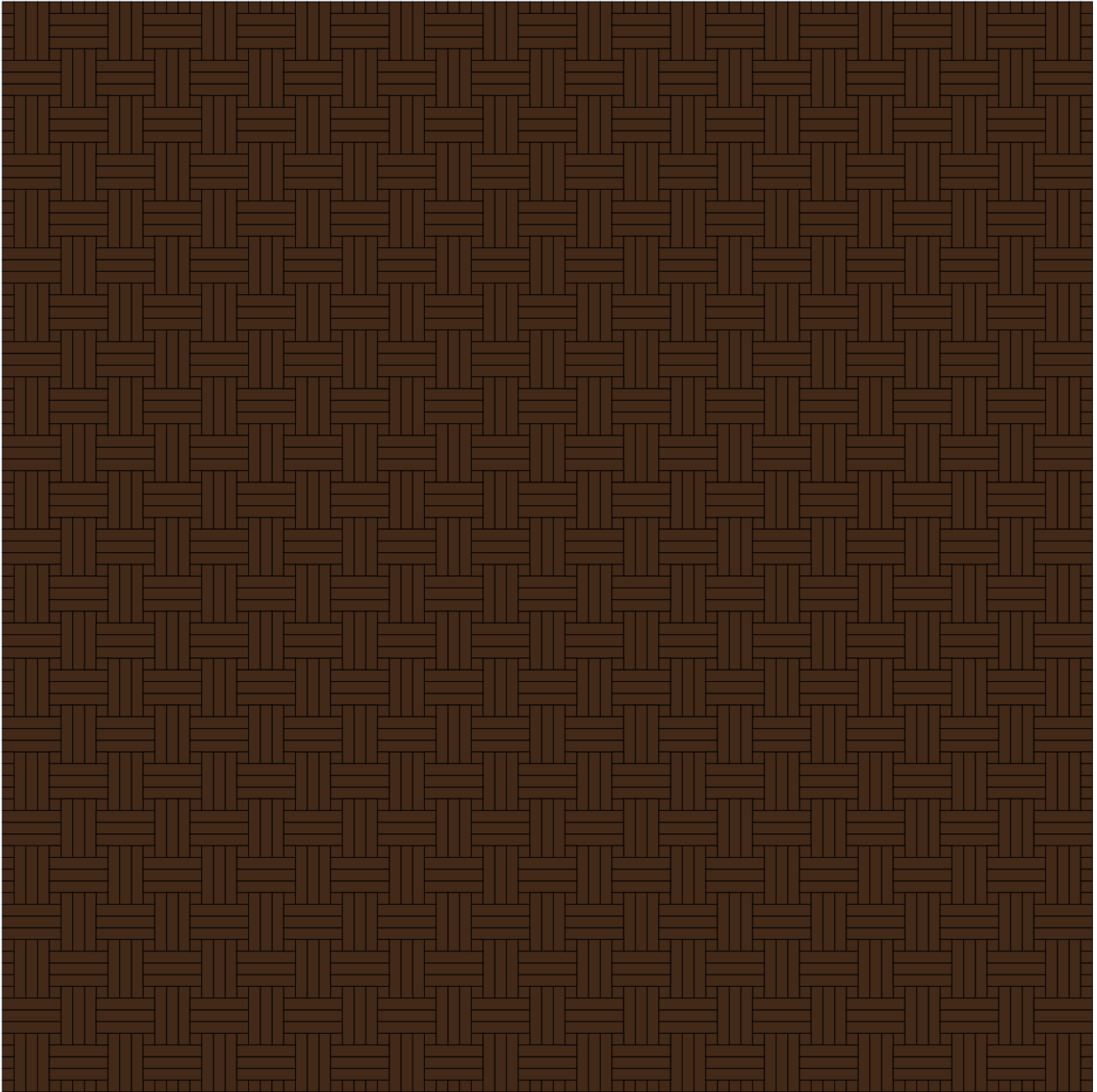
Rough



Il seguente schema di posa comporta un'alternanza di texture e di colori randomica, per cui non è possibile calcolare la quantità dei singoli articoli per metro quadro.

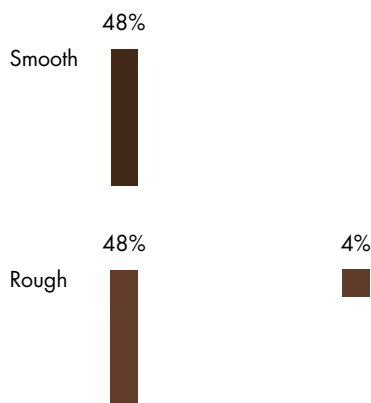
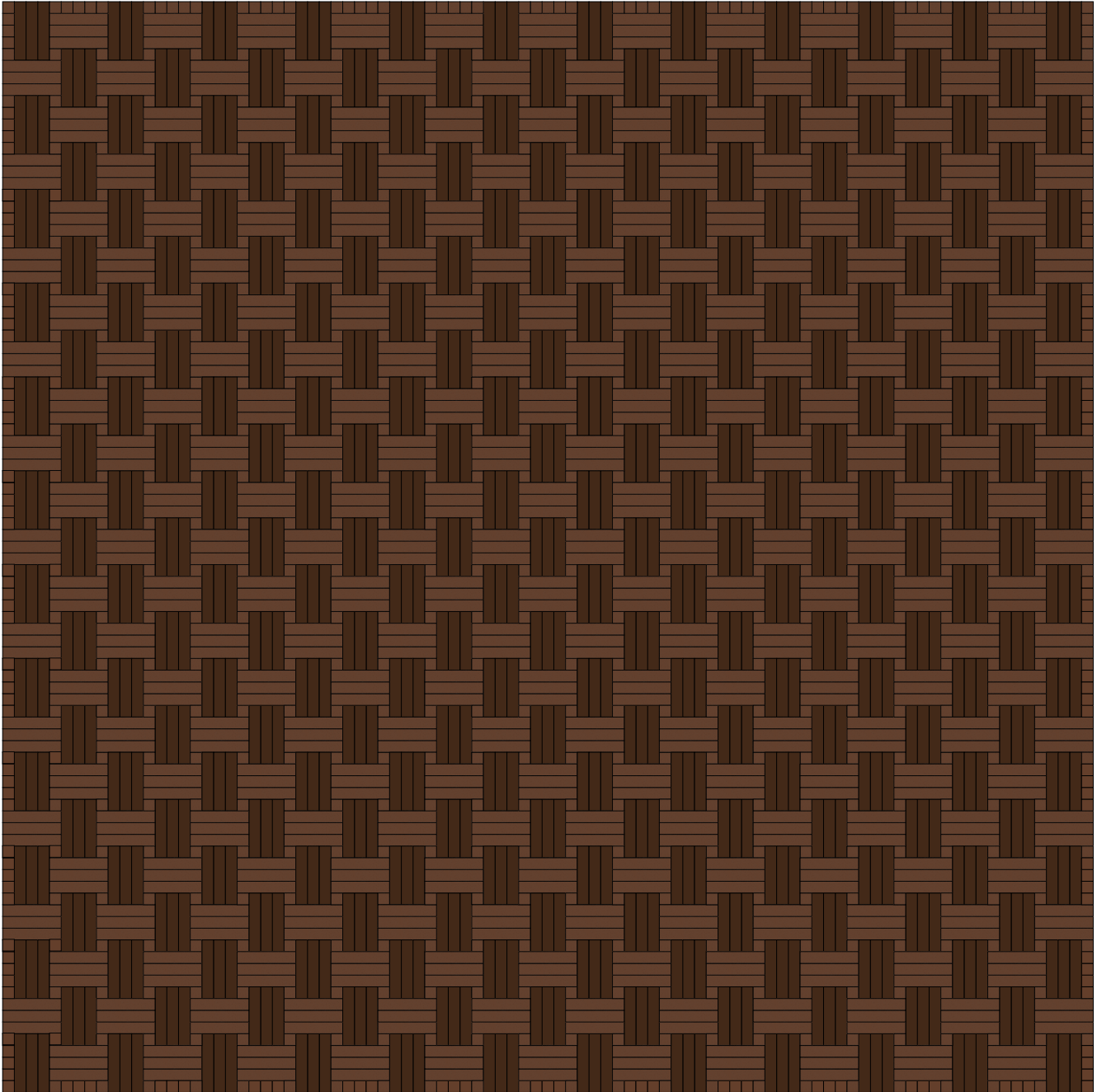
The suggested layout features a random alternation of textures and colours, so the quantity of each featured element can't be calculated per squared meter.





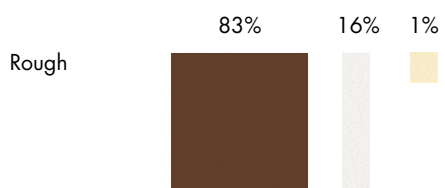
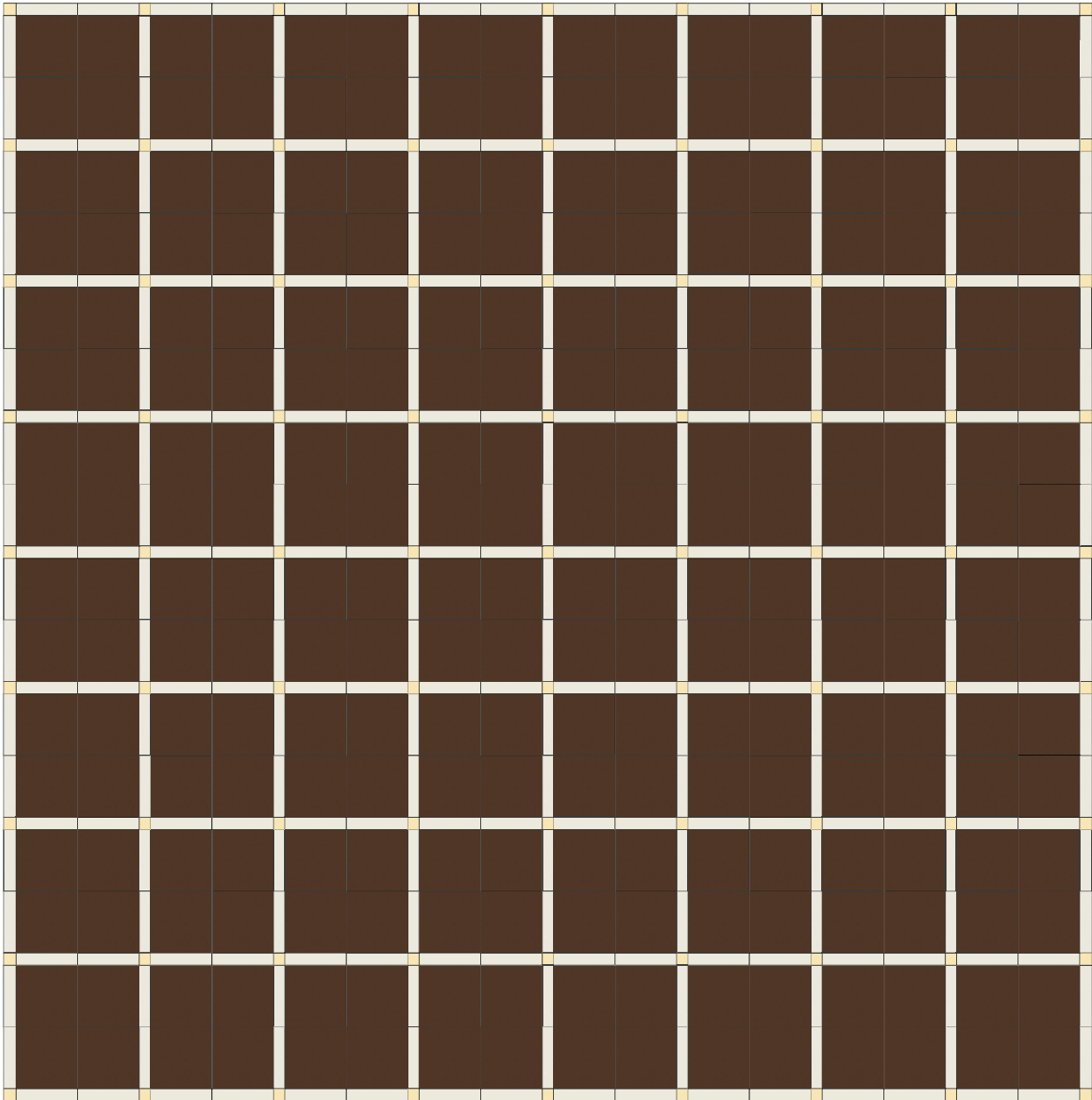
Le percentuali sono articolate su 1 mq di composizione.
Le quantità ricavate vengono arrotondate alla scatola completa.

The percentages are organised on a composition of 1 sqm.
The amounts obtained are rounded to the full box.



Le percentuali sono articolate su 1 mq di composizione.
Le quantità ricavate vengono arrotondate alla scatola completa.

The percentages are organised on a composition of 1 sqm.
The amounts obtained are rounded to the full box.



Scan the QR code to discover more about Time.

All the rights are reserved.

Not any part of this work can be reproduced
in any way without the preventive written
authorization by Mutina. All work is
copyrighted © to their respective owners.



To discover more about Mutina
collections visit mutina.it

Ceramiche Mutina Spa
Via del Crociale 25
41042 Fiorano Modenese, Italia
T +39 0536812800
F +39 0536812808
info@mutina.it
www.mutina.it

© Mutina 2023