



Neri&Hu
Hé

MUTINA EDITIONS

Neri&Hu

Biography



Lyndon Neri and Rossana Hu at Mutina Headquarters

The work of **Lyndon Neri** and **Rossana Hu** in design and architecture has long stood out for its ability to weave together disciplines, cultures, and temporalities. At the core of their practice lies a commitment to **enriching contemporary life through design**, while sustaining a thoughtful and critical dialogue with **collective memory**, an approach that resonates deeply with Mutina's own vision, where **material experimentation** and **cultural research** converge to shape new narratives in ceramic design. The following exchange unfolds through a series of associations we invited them to explore.

“IN SYMBOLIC ART, HEGEL
DESCRIBED THE TENSION
BETWEEN MEANING AND FORM,
OFTEN RESOLVED THROUGH
PRIMARY GEOMETRIES AND
MONUMENTAL ABSTRACTIONS.
WE EMBRACED THIS LEGACY
BY TRANSLATING ANCIENT
COSMOLOGICAL PRINCIPLES
INTO EVERYDAY OBJECTS.”

Lyndon Neri and Rossana Hu

Neri&Hu

Hé



With **Hé** (from Chinese, “harmonious series”), **Neri&Hu** return to the elementary language of **ancient ritual vessels** to celebrate the ordinary and elevate the everyday.

The collection represents a **philosophical exploration of ceramics**, guided by the Hegelian conception of symbolic art, which holds that abstract and spiritual ideas seek form in material expression, giving rise to objects that are at once enigmatic and deeply evocative.

Fāng (square) and **Yuán** (circle)—symbols of earth and heaven in Chinese cosmology—form the vocabulary of the collection: essential shapes that express a philosophy of coexistence between contrast and harmony.

The collection reinterprets, in a contemporary key, the principles of **balance, symmetry, and formal hierarchy** typical of those artifacts, transferring them into a decorative context connected to the domestic sphere. From this formal and symbolic reinterpretation emerges a new **Editions** line composed of three types of objects, characterized by the elegant combination of **ceramic** and **solid wood**.

Each element is made using **the ancient slip-casting technique** and subsequently **hand-glazed**.

The collection is the result of a slow and precise process that respects the material and allows for the creation of sculptural objects with forms and proportions typical of ancient traditional Chinese vessels. The alternation of finishes—glossy surfaces, satin glazes, and natural textures—creates a balance between sheen and opacity. At the end of the process, **each piece is hand-signed and numbered** to emphasize the authenticity of artisanal production.

With Hé, ceramic artifacts are transformed into functional objects with soft, measured surfaces, imbued with a discreet sense of gravity. The collection does not impose its meaning but suggests it, allowing the user to perceive, in these elementary forms, a **deeper continuity between past and present, spirit and matter, use and symbol**.

In this way, **Neri&Hu** propose the idea that even the most essential objects can become carriers of cultural memory and metaphysical aspiration. The intention is to create objects that are both humble and profound, rooted in ancient philosophy yet fully alive within the daily ritual of living. A project of **symbolic art**, in which every form holds a thought and every gesture becomes an attribution of meaning.

Neri&Hu

Chéng no. 1, Chéng no. 2

Chéng no. 1, is a vase composed of two interlocking elements:
a square ceramic base on which a circular wooden tray is placed.

Chéng no. 2, features a ceramic base with a central cylinder rising
from the surface of a wooden plate.



Neri&Hu
Vase: Chéng no.2 at Dusk, 2026

Ceramic and Light Oak wood
Handmade through casting technique
h 33 x 44 cm (h 13 x 17.5 in) | 8,2 kg
Limited edition of 100 pieces plus 3 A.P.
Signed and numbered beneath the base.



Neri&Hu
Vase: Chéng no.2 at Dusk, 2026
Vase: Chéng no.2 at Dawn, 2026
detail

Neri&Hu
Shuāng

Shuāng is a raised stand composed of two circular plates, one in ceramic and one in wood, connected by a cylinder.



Neri&Hu
Stand: Shuāng at Dusk, 2026
Stand: Shuāng at Dawn, 2026

Ceramic and dark walnut wood with rotating top
Handmade through casting technique
h 12.8 x 32 cm (h 5 x 12.5 in) | 7,5 kg
Limited edition of 100 pieces plus 3 A.P.
Signed and numbered beneath the base.



Neri&Hu
Stand: Shuāng at Dusk, 2026
Stand: Shuāng at Dawn, 2026
detail

Neri&Hu

Bì

Bì is a tray made of three glazed ceramic cylindrical containers arranged one inside the other to create a series of concentric circles. The progression of scale is emphasized by the chromatic and finish sequence chosen for the two matte-finish variants.



Neri&Hu
Tray: Bi at Dusk, 2026

Ceramic

Handmade through casting technique

h 11.5 x 15.5 cm (h 4.5 x 6 in), h 70 x 23.2 cm (h 27.5 x 9 in)

h 45 x 37.2 cm (h 17.5 x 14.5 in) | 13 kg

Limited edition of 100 pieces plus 3 A.P.

Signed and numbered beneath the base.

MUTINA EDITIONS



Neri&Hu
Tray: Bi at Dawn, 2026

Ceramic

Handmade through casting technique

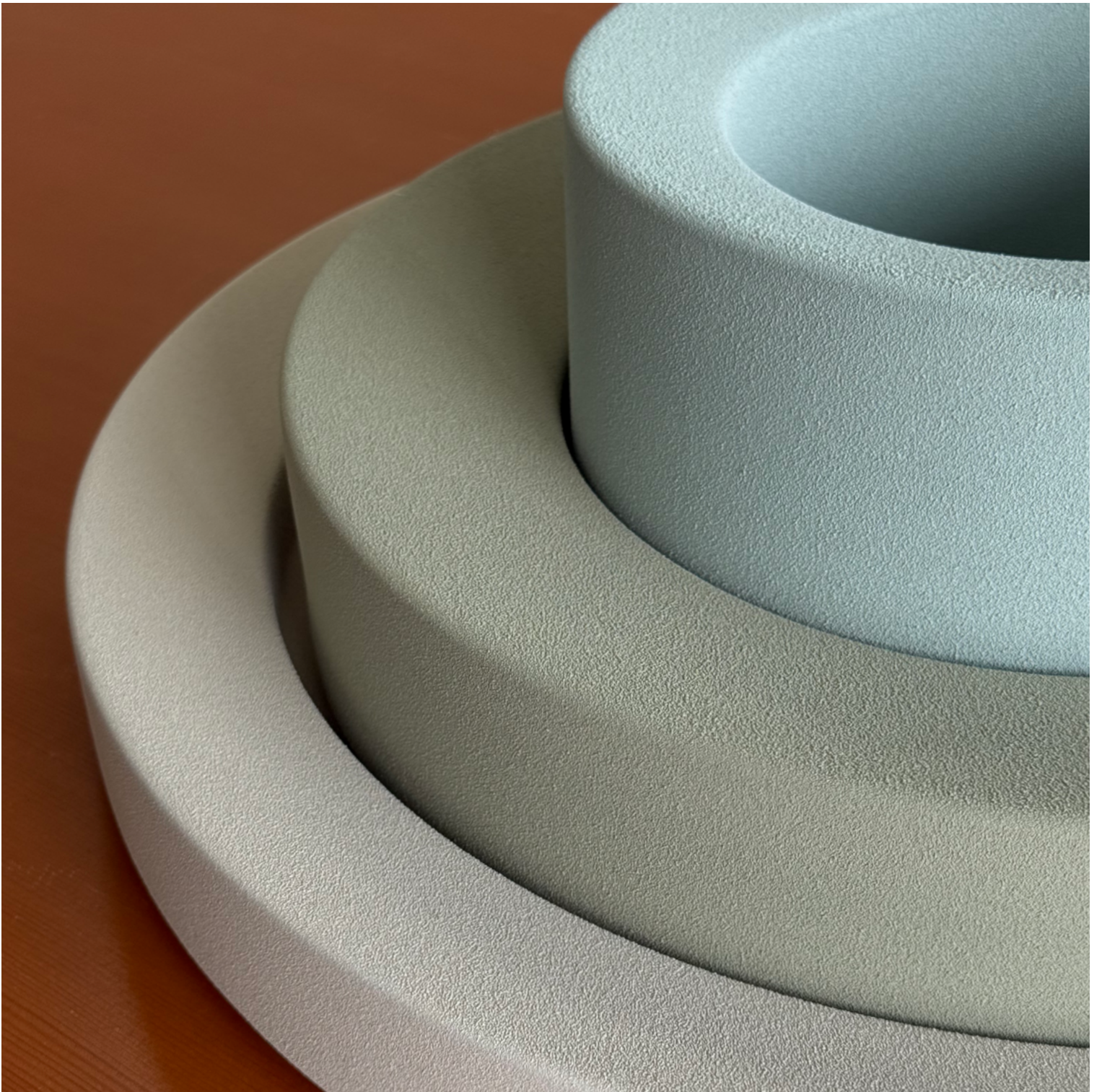
h 11.5 x 15.5 cm (h 4.5 x 6 in), h 70 x 23.2 cm (h 27.5 x 9 in)

h 45 x 37.2 cm (h 17.5 x 14.5 in) | 13 kg

Limited edition of 100 pieces plus 3 A.P.

Signed and numbered beneath the base.

MUTINA EDITIONS



Neri&Hu
Tray: Bi at Dawn, 2026
detail

Authenticity

The Editions are collections of ceramic objects entirely handmade according to the Italian craft tradition. Developed by the designers and artists of the Mutina team, each piece is signed and stamped sequentially to emphasise the exclusivity of the production. The Editions are, in fact, unique creations destined to last over time and to reach, one by one, every corner of the world.

They offer furnishing accessories designed for interior decoration, combining the authenticity of craftsmanship with a contemporary look and feel. They are exclusive artistic objects, reflecting the creative approach of their authors and bringing out the iconicity of the brand.

With Mutina Editions, the company kicks off a new phase in its path of enhancing the ceramic material in line with the brand's quality standards. Small imperfections testify to the authenticity of the craftsmanship.





Each object is available in the Dawn and Dusk color variants.

Dawn
Dusk





Vase: Chéng no.1 at Dawn
h 18.5 x 44 cm (h 7.5 x 17.5 in)



Vase: Chéng no.1 at Dusk
h 18.5 x 44 cm (h 7.5 x 17.5 in)



Vase: Chéng no.2 at Dawn
h 33 x 44 cm (h 13 x 17.5 in)



Vase: Chéng no.2 at Dusk
h 33 x 44 cm (h 13 x 17.5 in)



Stand: Shuāng at Dawn
h 12.8 x 32 cm (h 5 x 12.5 in)



Stand: Shuāng at Dusk
h 12.8 x 32 cm (h 5 x 12.5 in)



Tray: Bi at Dawn
h 11.5 x 15.5 cm (h 4.5 x 6 in)
h 70 x 23.2 cm (h 27.5 x 9 in)
h 45 x 37.2 cm (h 17.5 x 14.5 in)



Tray: Bi at Dusk
h 11.5 x 15.5 cm (h 4.5 x 6 in)
h 70 x 23.2 cm (h 27.5 x 9 in)
h 45 x 37.2 cm (h 17.5 x 14.5 in)

Discover more on
mutina.it

For further enquiries, please contact:
editions@mutina.it

Casa Mutina Milano
via Cernaia 1A