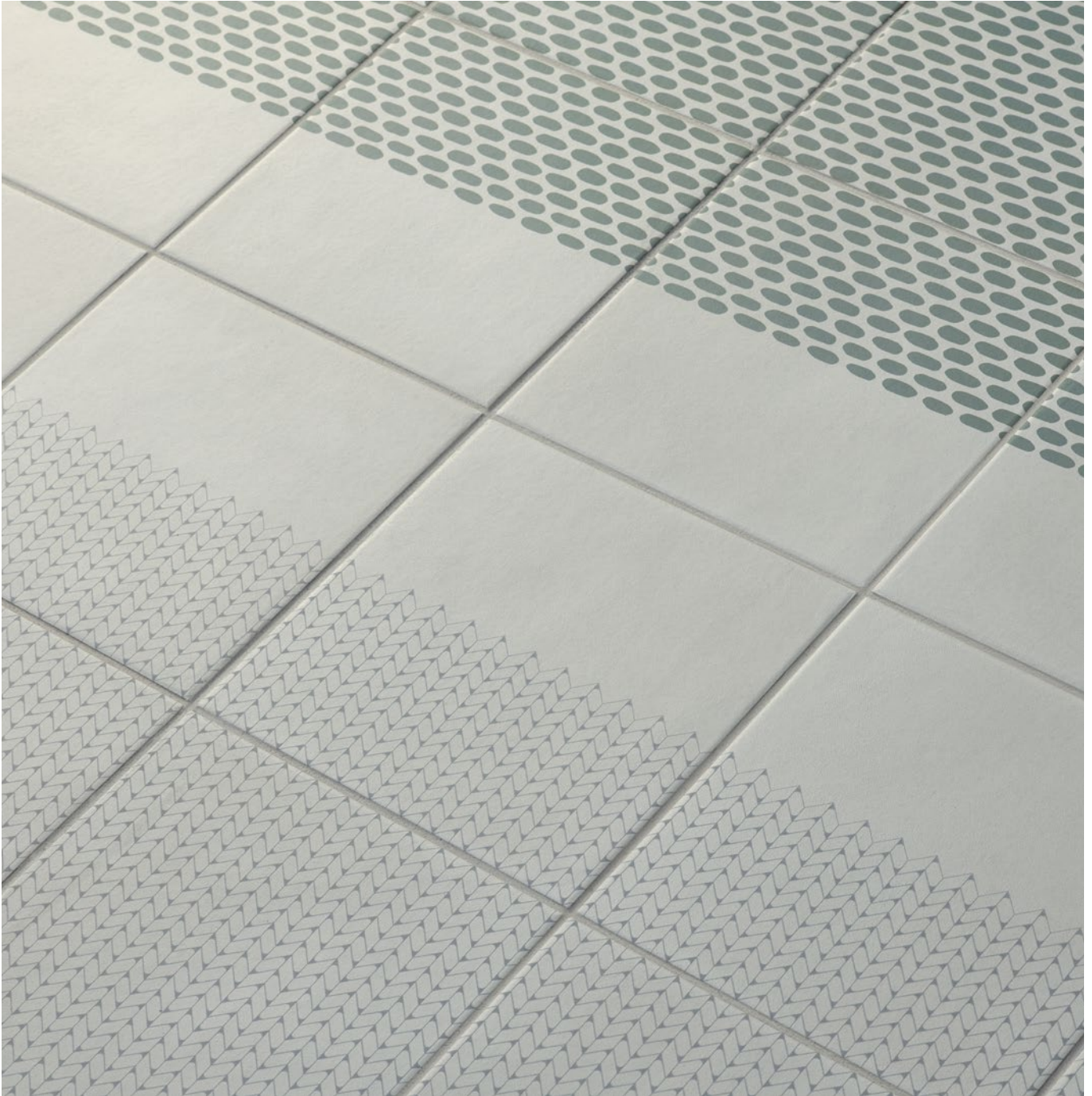


# Mutina

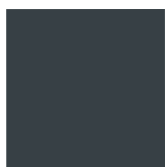
# Tape

by Raw Edges

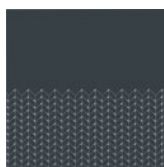




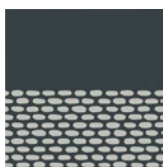
# Colors



Base Black



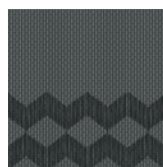
Mesh Half Black



Cobble Half Black



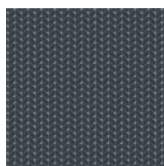
Grainy Half Black



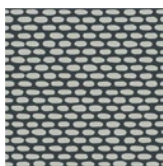
Zigzag Half Black



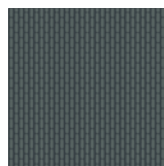
grout: Nero 06



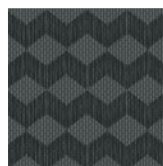
Mesh Black



Cobble Black



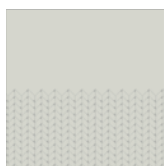
Grainy Black



Zigzag Black



Base White



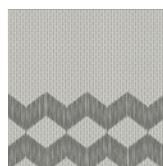
Mesh Half White



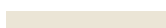
Cobble Half White



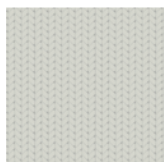
Grainy Half White



Zigzag Half White



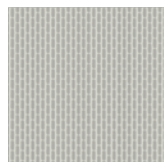
grout: Calce 01



Mesh White



Cobble White



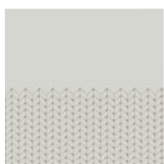
Grainy White



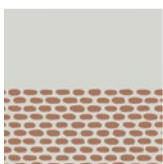
Zigzag White



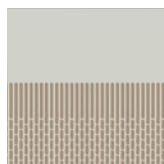
Base White



Mesh Half Brown



Cobble Half Brown



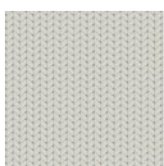
Grainy Half Brown



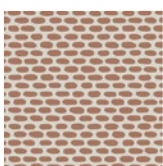
Zigzag Half Brown



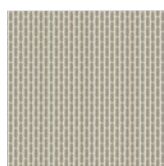
grout: Calce 01



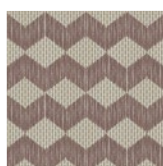
Mesh Brown



Cobble Brown



Grainy Brown

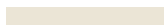


Zigzag Brown

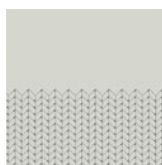
# Colors



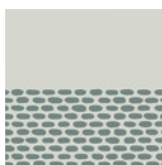
Base White



grout: Calce 01



Mesh Half Green



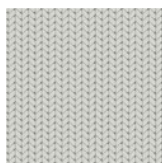
Cobble Half Green



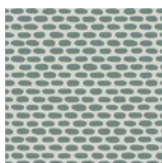
Grainy Half Green



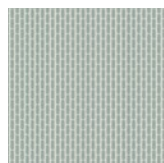
Zigzag Half Green



Mesh Green



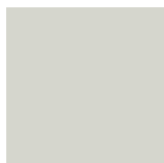
Cobble Green



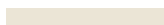
Grainy Green



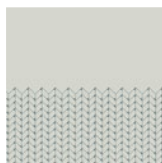
Zigzag Green



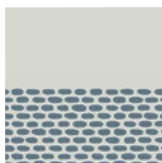
Base White



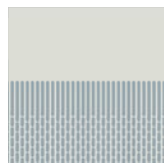
grout: Calce 01



Mesh Half Blue



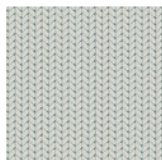
Cobble Half Blue



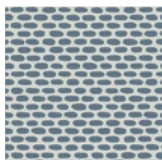
Grainy Half Blue



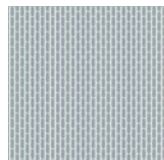
Zigzag Half Blue



Mesh Blue



Cobble Blue



Grainy Blue



Zigzag Blue

## General information

collection	Tape
design	Raw Edges, 2017
production	Industrial
material	Glazed porcelain stoneware
thickness	10 mm
nominal sizes	20,5-20,5 cm (8"-8")
specification	<ul style="list-style-type: none"> <li>- 2 base color: White and Black</li> <li>- 8 graphic patterns (full pattern)</li> <li>- 8 graphic "half patterns" to create connections and a soft blend on one pattern with the other</li> <li>- 5 combinations of base+colored patterns: 1 on Black base and 4 on White base</li> <li>- Though the tile is NON RECTIFIED the patterns are perfectly centered to obtain a continuous and homogeneous surface</li> <li>- 5 different glazing surface textures random mixed</li> </ul>
patents	Registered design n° 004427748-0001/0027 – date of registration: 31/10/2017
category	UNI EN 14411 App G (BIA group) GL



20,5-20,5 cm  
8"-8"

## Laying and maintenance tips

use	Floor, wall – indoor, outdoor.
installation	For an even, smooth shading effect when laying, alternate material from several different boxes.
recommended adhesive	Adhesive for porcelain stoneware.
recommended joints	2mm joints. Use wedges to fix the caliber differences in work size between tiles.
recommended fillers	Cement-based grout / epoxy grout.
cleaning at the end of installation	<p><b>CEMENT-BASED GROUT:</b> Buffered acid (e.g. DETERDEK PRO by FILA, or similar). Wet the floor with water, dilute the product 1:5 with water and pour it on the floor. Wait for 2 or 3 minutes then use a white scotch brite pad and rinse well with clean water.</p> <p><b>EPOXY GROUT:</b> Alkaline detergent (e.g. FILA CR10 by FILA). FILA CR10: apply pure, wait for 30 minutes then use a green scotch brite pad.</p> <p><b>SILICONE:</b> Solvent for silicone (e.g. FILA ZERO SIL.). Pour it straight onto the stain, wait for 20 minutes and remove the mark using scotch brite.</p> <p><b>PAINT:</b> Can usually be removed using water, but if resin-based paints or particular enamels have been used, it is best to ask the manufacturer which solvent is most suitable.</p> <p><b>RUST:</b> stain remover es. FILA NO RUST. Apply the product onto the stain, leave for 15 minutes, remove the residue and rinse thoroughly.</p>
general cleaning (installed tiles)	You are recommended to use ordinary neutral detergent diluted in water. Avoid using acid or alkaline products, waxes and/or impregnants. During ordinary cleaning it is recommended to use extremely abrasive items (such as scourers and iron or steel sponges) as little as possible. This recommendation must be adhered to rigorously in the case of tiles with a glossy surface finishing as they are more susceptible to the risk of scuffs, scratches and loss of shine, etc. In the event of heavy dirt or particularly textured surfaces, use an alkaline detergent and rinse after washing. For large surfaces, the use of a floor washing machine is recommended. During every-day cleaning procedures, it is necessary to remember that certain types of dirt (dust, sand) increase the abrasive effect of foot-traffic. Therefore we recommend that you avoid bringing in this type of dirt, which comes in from the outside, by placing a door-mat at the entrance.
calibers (real size)	20,5 cm x 20,5 cm non rectified with 2mm tolerance