

Rombini

design by Ronan & Erwan Bouroullec

colours

sizes

technical features

packing

MU
TIN
A

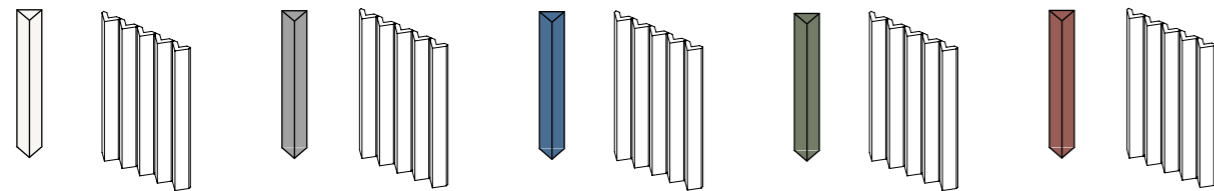
Sizes & Colors

| | | |
|------------|--|------|
| design | Ronan & Erwan Bouroullec | 2015 |
| production | industrial + artisanal | |
| material | Carré: gres porcellanato smaltato - glazed porcelain stoneware. Losange: gres porcellanato in doppio caricamento - double charge porcelain. Triangle: impasto pressato smaltato - glazed pressed body. | |
| features | Carré: lastre squadrate e rettificate ognuna esattamente uguale all'altra squared and rectified slabs each one exactly the same as the others | |
| thickness* | Carré 11 mm - Triangle 22 mm - Losange 4,7 mm | |
| * | misure nominali/nominal sizes | |

Modello depositato n° 002889055-0019/0024 – data di deposito: 03/12/2015
Registered design n° 002889055-0019/0024 – date of registration: 03/12/2015

Triangle Small

5 pcs *31,5-3,5-2,2 cm (12"-1"-1") | on net *18,6-31,5 cm (7"-12")



Triangle Small White

Triangle Small Grey

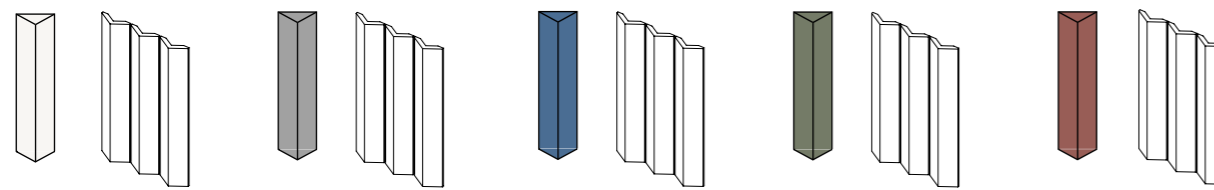
Triangle Small Blue

Triangle Small Green

Triangle Small Red

Triangle Large

3 pcs *31,5-6-2,2 cm (12"-2"-1") | on net *18,6-31,5 cm (7"-12")



Triangle Large White

Triangle Large Grey

Triangle Large Blue

Triangle Large Green

Triangle Large Red

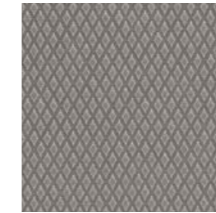
Sizes & Colors

Carré

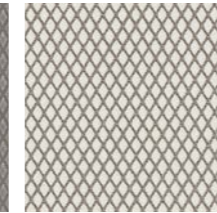
*40-40 cm (16"-16")



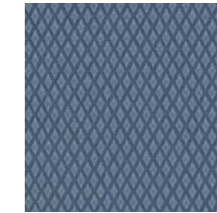
Carré Uni White



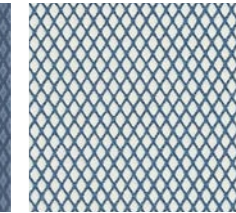
Carré Uni Grey



Carré Light Grey



Carré Uni Blue



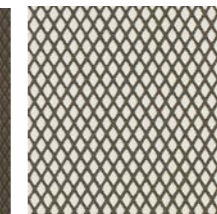
Carré Light Blue



Battiscopa Carré Uni
*3,8-40 cm (2"-16")
White, Grey, Blue,
Green, Red



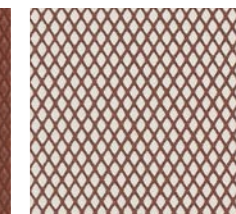
Carré Uni Green



Carré Light Green



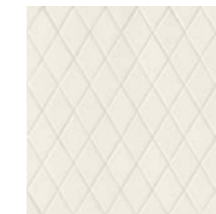
Carré Uni Red



Carré Light Red

Losange

*27,5-25,7 cm (11"-10")



Losange White

Stucco/Grout: Calce 01



Losange Grey

Stucco/Grout: Cemento 60



Losange White



Losange Blue

Stucco/Grout: Dark Blue 67



Losange White

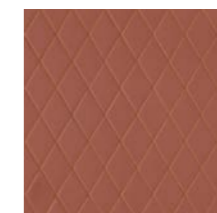


Losange Green

Stucco/Grout: Piombo 53



Losange White



Losange Red

Stucco/Grout: Red 66



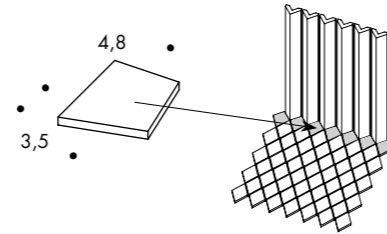
Losange White

Complementary Pieces

Raccordo Losange - Triangle Small Grid

Tessere di mosaico di dimensioni particolari da utilizzare come raccordo Losange - Triangle Small. Vendita a pezzo sciolto. Disponibile in tutti i colori della collezione.
Chips of mosaics with particular sizes to be used as a connector between Losange and Triangle Small. Product sold in bulk. Available in all colours of the collection.

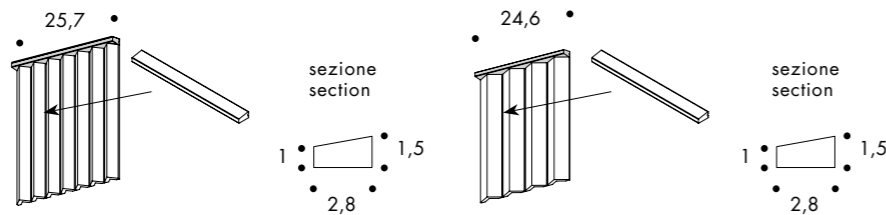
sizes *3,5-4,8 cm (2".2")



Terminal Small/ Large

Terminale di chiusura disponibile in tutti i colori della collezione.
1 pezzo di Terminal Small è modulare con 7 pz di Triangle Small.
1 pezzo di Terminal Large è modulare con 4 pz di Triangle Large.
Closing piece available in all colours of the collection.
1 piece of Terminal Small is modular with 7 pieces of Triangle Small.
1 piece of Terminal Large is modular with 4 pieces of Triangle Large.

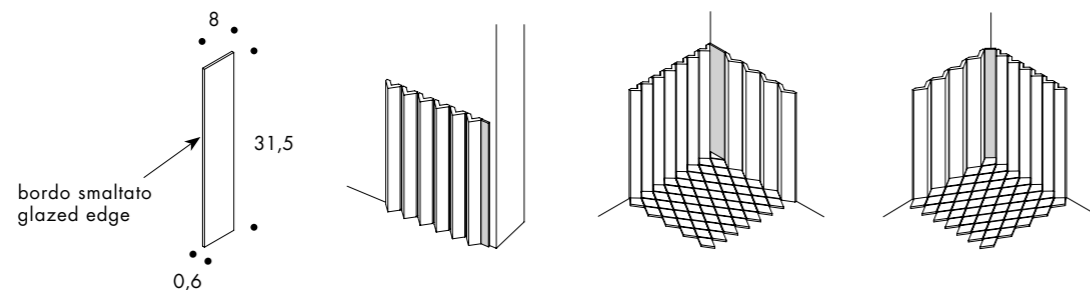
sizes Small: *25,7· H 1,5· 2,8 cm (10". H 1".2") Large: *24,6· H 1,5· 2,8 cm (10". H 1".2")



Listello di chiusura

Listello con un bordo smaltato da utilizzare come chiusura a parete o come raccordo Losange - Triangle (Small o Large) negli angoli. Disponibile in tutti i colori della collezione.
Listello with a glazed edge to be used in the corner as wall closure or as a connector between Triangle (Small and Large) and Losange. Available in all colours of the collection.

sizes *8· 31,5· 0,6 cm (3". 12".1")



Technical Features

Bla Group

| NORMA STANDARD | CARATTERISTICHE FEATURES | VALORE PRESCRITTO VALUE REQUIRED | ROMBINI CARRÉ |
|---|--|--|-------------------------------------|
| ISO 10545/3 | assorbimento d'acqua/ water absorption | < 0,5% | < 0,5% |
| ASTM C373 | | < 0,5% | < 0,5% |
| ISO 10545/9 | resistenza agli sbalzi termici resistance to thermal shock | nessuna alterazione visibile no visible alteration | resiste resistant |
| ASTM C484 | | no samples must show visible defects | unaffected |
| ISO 10545/12 | resistenza al gelo frost resistance | nessuna alterazione visibile no visible alteration | resiste resistant |
| ASTM C1026 | | unaffected | unaffected |
| ISO 10545/13 | resistenza agli attacchi chimici resistance to chemical attacks | nessuna alterazione visibile no visible alteration | GA-GLA |
| ASTM C650 | | | GA-GLA |
| ISO 10545/4 | sforzo di rottura (N) breaking strenght (N) | Sp ≥ 7,5 min 1.300 | resiste resistant |
| DIN 51130-04 | | valori medi 6±10° R9 10±19° R10 19±27° R11 27±35° R12 > 35° R13 | R10 |
| ISO 10545/14 | resistenza alle macchie stains resistance | classe 3 min. minimum 3 | 5 |
| EN 101 | durezza superficiale (scala mohs) surface hardness (scala mohs) | > 5 | 6 |
| LEED CERTIFICATION 4.1 | | | 6% recycled material (pre-consumer) |
| Sistema produttivo con certificazione ambientale ISO 14001: 2004 Environmental management system ISO 14001: 2004 | | | |

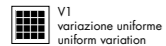
Bla Group

| NORMA STANDARD | CARATTERISTICHE FEATURES | VALORE PRESCRITTO VALUE REQUIRED | ROMBINI TRIANGLE |
|----------------|--|---|-----------------------|
| ISO 10545/3 | assorbimento d'acqua/ water absorption | 3 ≤ X ≤ 6% | 3,8% |
| ASTM C373 | | 3 ≤ X ≤ 6% | 3,8% |
| ISO 10545/9 | resistenza agli sbalzi termici resistance to thermal shock | nessuna alterazione visibile no visible alteration | resiste resistant |
| ASTM C484 | | no samples must show visible defects | unaffected |
| ISO 10545/14 | resistenza alle macchie stains resistance | classe 3 min. minimum 3 | 5 |
| ISO 10545/13 | resistenza agli attacchi chimici resistance to chemical attacks | nessuna alterazione visibile no visible alteration | resiste unaffected |

Technical Features

Bla Group

| NORMA STANDARD | CARATTERISTICHE FEATURES | VALORE PRESCRITTO VALUE REQUIRED | ROMBINI LOSANGE |
|----------------|--|--|----------------------|
| ISO 10545/3 | assorbimento d'acqua/ water absorption | < 0,5% | < 0,5% |
| ASTM C373 | | < 0,5% | < 0,5% |
| ISO 10545/9 | resistenza agli sbalzi termici resistance to thermal shock | nessuna alterazione visibile no visible alteration | resiste resistant |
| ASTM C484 | | no samples must show visible defects | unaffected |
| ISO 10545/12 | resistenza al gelo frost resistance | nessuna alterazione visibile no visible alteration | resiste resistant |
| ASTM C1026 | | unaffected | unaffected |
| ISO 10545/13 | resistenza agli attacchi chimici resistance to chemical attacks | nessuna alterazione visibile no visible alteration | resiste resistant |
| ASTM C650 | | | unaffected |
| ISO 10545/4 | sforzo di rottura (N) breaking strenght (N) | N/mm2>35 | resiste resistant |
| DIN 51130-04 | | valori medi 6÷10° R9 10÷19° R10 19÷27° R11 27÷35° R12 > 35° R13 | R10 |
| ISO 10545/14 | resistenza alle macchie stains resistance | classe 3 min. minimum 3 | 5 |



Packing

| FORMATO SIZE | PZ-MQ PCS-SQM | PZ-SCAT. PCS-BOX | MQ-SCAT. SQM-BOX | SCAT.-PAL. BOX-PAL. | KG-SCAT. KG-BOX | KG-PAL. KG-PAL. | MQ-PAL. SQMS-PAL. |
|---|---------------|------------------|------------------|---------------------|-----------------|-----------------|-------------------|
| carré 40-40 | 6,25 | 8 | 1,28 | 48 | 28,12 | 1350 | 61,44 |
| battiscopa 3,8-40 | - | 10 | 4 ml | - | 3,25 | - | - |
| losange 27,5-25,7 | 14,00 | 7 | 0,50 | 90 | 5,00 | 450 | 45 |
| raccordo losange - triangle small 3,5-4,8 | - | - | - | - | - | - | - |
| triangle small su rete/on net 18,6-31,5 | 17 | 9 | 0,53 | 63 | 11,00 | 693 | 33,40 |
| triangle large su rete/on net 18,6-31,5 | 17 | 9 | 0,53 | 63 | 10,00 | 630 | 33,40 |
| terminal small | - | 10 | 2,57 ml | - | 3,25 | - | - |
| terminal large | - | 10 | 2,46 ml | - | 3,25 | - | - |
| listello di chiusura 8-31,5-0,6 | - | - | - | - | - | - | - |

Ronan & Erwan Bouroullec



Ronan e Erwan Bouroullec, designer originari della Bretagna, sono entrati a far parte del team Mutina, nel 2011. Hanno firmato le collezioni Pico, Rombini e Piano.

La collaborazione tra Ronan e Erwan Bouroullec si sviluppa come un dialogo permanente alimentato dalle loro personalità molto diverse. Lavorano con numerose aziende, tra cui Vitra, Kvadrat, Magis, Kartell, Established and Sons, Ligne Roset, Axor, Hay, Nanimarquina, Issey Miyake e Cappellini, e intraprendono spesso occasionali progetti d'architettura. Allo stesso tempo, portano avanti un'attività di sperimentazione presso la Galerie Kreo di Parigi. Molti i premi al loro attivo: designer dell'anno al Salone del Mobile di Parigi nel 2002, il Finn-Juhl Prize a Copenhagen nel 2008, ben due "Best of the Best" Red Dot Design Award e la Panerai London design Medal nel 2014. Numerose mostre sono state dedicate al loro lavoro e le loro creazioni sono parte delle collezioni permanenti di diversi musei internazionali.

Brittany origin designers, Ronan and Erwan Bouroullec are part of the Mutina team from 2011. They designed the Pico, Rombini and latest Piano collections.

The collaboration between Ronan e Erwan Bouroullec is a permanent dialogue nourished by their distinct personalities. They design for many manufacturers, including Vitra, Kvadrat, Magis, Kartell, Established and Sons, Ligne Roset, Axor, Hay, Nanimarquina, Issey Miyake and Cappellini, and often embark on occasional architectural projects. They simultaneously continue their experimental activity at Galerie Kreo, Paris. Their work has been recognised with many awards including designers of the year at the Paris Salon du Meuble in 2002, the Finn-Juhl Prize, in Copenhagen in 2008, two "Best of the Best" Red Dot Design Awards and the Panerai London Design Medal in 2014. Several exhibitions have showcased their works and their creations are part of the permanent collections of several international museums.

mutina.it

Follow us on

