

Diarama

design by Hella Jongerius

colours

sizes

technical features

packing

MU
TIN
A

Diarama Colors



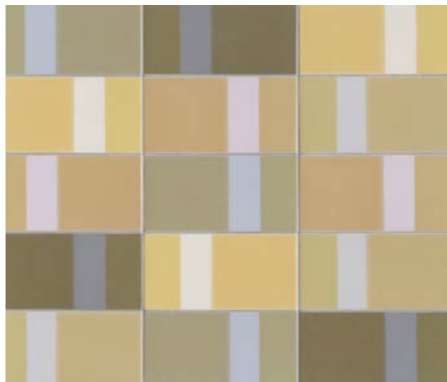
ASH Light

Stucco/Grout: grey 76



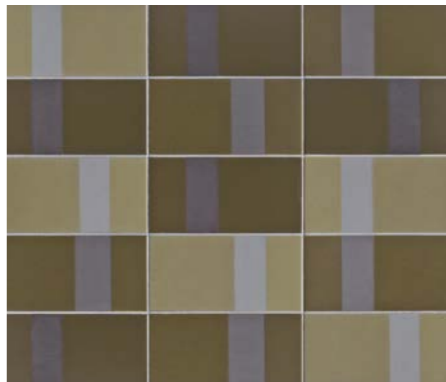
ASH Dark

Stucco/Grout: cenere 62



MAIZE Light

Stucco/Grout: grey 76



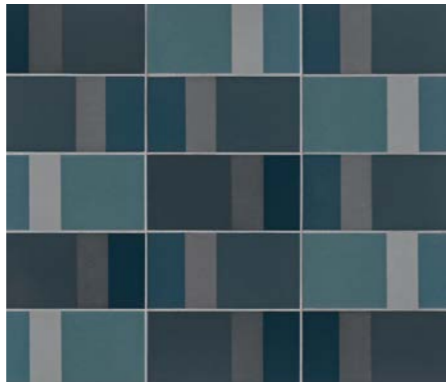
MAIZE Dark

Stucco/Grout: cenere 62



SKY Light

Stucco/Grout: grey 76



SKY Dark

Stucco/Grout: cenere 62



BLUSH Light

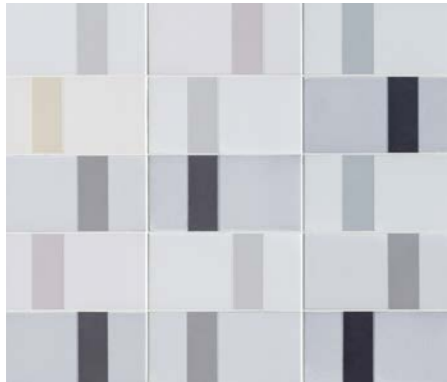
Stucco/Grout: grey 76



BLUSH Dark

Stucco/Grout: cenere 62

Diarama Black & White



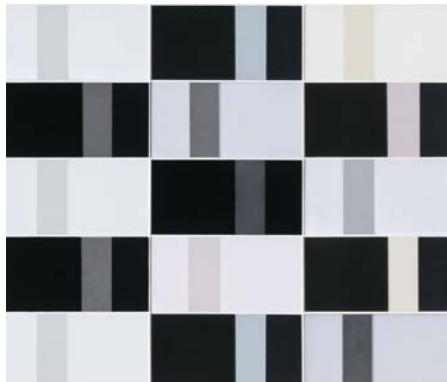
CHALK

Stucco/Grout: calce 01



IRON

Stucco/Grout: nero 06



DUSK

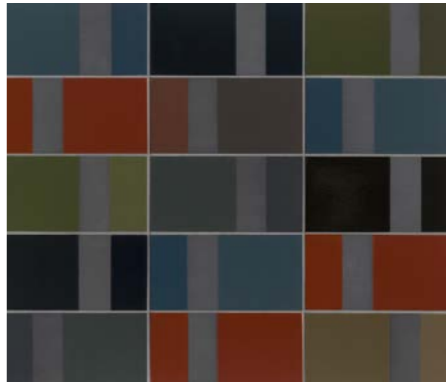
Stucco/Grout: calce 01

Diarama Mix



GREY CHROMA

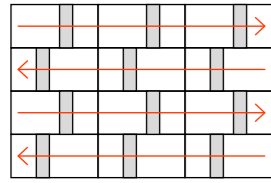
Stucco/Grout: cenere 62



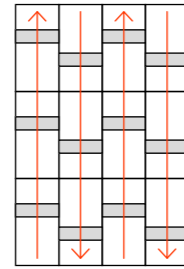
BLACK CHROMA

Stucco/Grout: nero 06

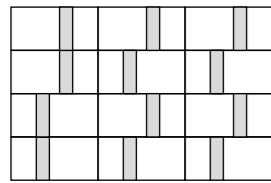
Installation Ideas



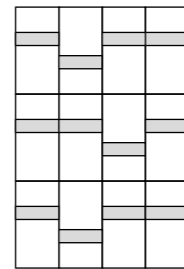
Alternato orizzontale
Alternate horizontal



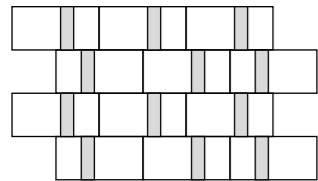
Alternato verticale
Alternate vertical



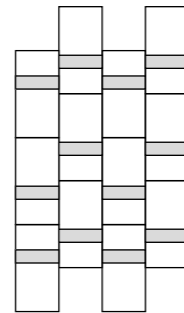
Random orizzontale
Random horizontal



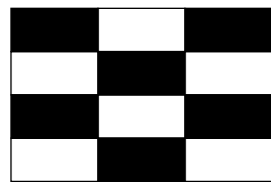
Random verticale
Random vertical



Random a correre orizzontale
Random horizontal running bond



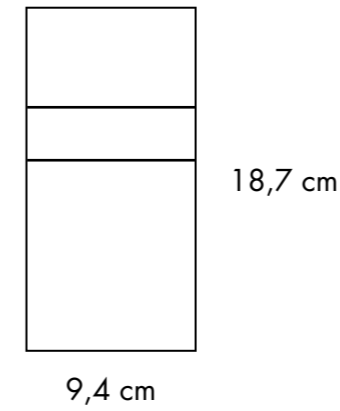
Random a correre verticale
Random vertical running bond



Scacchiera (Diarama Dusk)
Checkerboard (Diarama Dusk)

Sizes & Colors

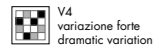
design	Hella Jongerius	2018
production	industrial	
material	gres porcellanato ad impasto omogeneo smaltato glazed homogeneous porcelain stoneware	
thickness	9 mm	
size	9,4·18,7 cm / 3 _{45/64} "·7 _{23/64} "	



Technical Features

UNI EN14411:2012 App. GI (Bla Group)

NORMA STANDARD	CARATTERISTICHE FEATURES	VALORE PRESCRITTO VALUE REQUIRED	DIARAMA
ISO 10545/3	assorbimento d'acqua water absorption	< 0,5%	conforme in conformity with standard
ISO 10545/9	resistenza agli sbalzi termici resistance to thermal shock	nessuna alterazione visibile no visible alteration	resiste resistant
ASTM C484		no samples must show visible defects	unaffected
ISO 10545/12	resistenza al gelo frost resistance	nessuna alterazione visibile no visible alteration	resiste resistant
ISO 10545/13	resistenza agli attacchi chimici resistance to chemical attacks	nessuna alterazione visibile no visible alteration	resiste resistant
ISO 10545/14	resistenza alle macchie stains resistance	classe 3 min minimum 3	5
LEED CERTIFICATION 4.1			24% pre-consumer recycled material



Packing

FORMATO SIZE	PZ-MQ PCS-SQM	PZ-SCAT PCS-BOX	MQ-SCAT SQM-BOX	SCAT-PAL BOX-PAL	KG-SCAT KG-BOX	KG-PAL KG-PAL	MQ-PAL SQM-PAL
all colors 9,4x18,7	56,89	45	0,79	48	16,95	813,60	37,92
dusk, chalk, iron 9,4x18,7	56,89	42	0,74	48	15,82	759,36	35,52

Hella Jongerius



Hella Jongerius, designer e ricercatrice instancabile, si è unita al team Mutina nel 2018. Ha progettato la collezione Diarama.

Nata in Olanda ma con base a Berlino, Hella Jongerius è conosciuta per la sua ricerca su colori e materiali in continua evoluzione, dove tradizione e contemporaneità si fondono con l'obiettivo di creare prodotti dalla forte individualità, coinvolgendo elementi artigianali all'interno del processo industriale. Nel 1993 ha fondato Jongeriuslab, dove porta avanti progetti indipendenti e collaborazioni con importanti aziende del settore. La designer lavora anche come Art Director per Vitra, e come Design Director per Danskina, Kvadrat e l'atelier di tappeti Maharam ad Amsterdam.

Nel 2017 ha ricevuto il Sikkens Prize, grazie al suo speciale contributo nel campo dei colori. Molte delle sue creazioni, inoltre, si trovano nelle collezioni permanenti di alcuni famosi musei, come il MoMA (New York), il Victoria and Albert Museum (Londra) e il Boijmans van Beuningen Museum (Rotterdam).

Designer and tireless researcher Hella Jongerius joined the Mutina team in 2018. She designed the Diarama collection.

Born in the Netherlands but based in Berlin, Hella Jongerius is well known for her never-ending colour and material research, where she combines the traditional with the contemporary, in order to create products with individual character by including craft elements in the industrial production process.

She founded Jongeriuslab in 1993, where both independent projects and works for major clients are developed. The designer also acts as Art Director for Vitra and Design Director for Danskina, Kvadrat and Maharam's rug atelier.

In 2017, Jongerius received the Sikkens Prize, thanks to her special contribution to the field of color. Furthermore, many of her products can be found in the permanent collections of important museums, such as MoMA (New York), the Victoria and Albert Museum (London) and Boijmans van Beuningen Museum (Rotterdam).

mutina.it

Follow us on

